

CSF2RA antibody

Catalog No: #38609

Package Size: #38609-1 50ul #38609-2 100ul

Orders: order@signalwayantibody.comSupport: tech@signalwayantibody.com

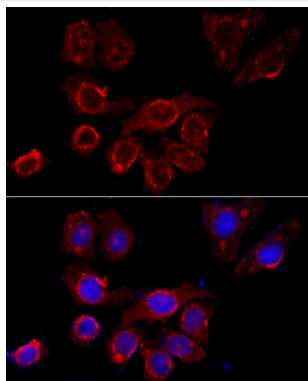
Description

| | |
|-----------------------|--|
| Product Name | CSF2RA antibody |
| Host Species | Rabbit |
| Clonality | Polyclonal |
| Purification | Antibodies were purified by affinity purification using immunogen. |
| Applications | IF |
| Species Reactivity | Human, Mouse |
| Specificity | The antibody detects endogenous level of total CSF2RA protein. |
| Immunogen Type | Recombinant Protein |
| Immunogen Description | Recombinant protein of human CSF2RA. |
| Target Name | CSF2RA |
| Other Names | GMR; CD116; CSF2R; SMDP4; CDw116; CSF2RX; CSF2RY; GMCSFR; CSF2RAX; CSF2RAY; GM-CSF-R-alpha; |
| Accession No. | Swiss-Prot#: P15509NCBI Gene ID: 1438 |
| Uniprot | P15509 |
| GeneID | 1438; |
| SDS-PAGE MW | 46kd |
| Concentration | 1.0mg/ml |
| Formulation | Supplied at 1.0mg/mL in phosphate buffered saline (without Mg ²⁺ and Ca ²⁺), pH 7.4, 150mM NaCl, 0.02% sodium azide and 50% glycerol. |
| Storage | Store at -20°C |

Application Details

IF 1:50 - 1:200

Images



Immunofluorescence analysis of HeLa cells using CSF2RA at dilution of 1:100 (40x lens). Blue: DAPI for nuclear staining.

Background

The protein encoded by this gene is the alpha subunit of the heterodimeric receptor for colony stimulating factor 2, a cytokine which controls the production, differentiation, and function of granulocytes and macrophages. The encoded protein is a member of the cytokine family of receptors. This gene is found in the pseudoautosomal region (PAR) of the X and Y chromosomes. Multiple transcript variants encoding different isoforms have been found for this gene, with some of the isoforms being membrane-bound and others being soluble.

Note: This product is for in vitro research use only