

FSHR antibody

Catalog No: #38614



Package Size: #38614-1 50ul #38614-2 100ul

Orders: order@signalwayantibody.com
Support: tech@signalwayantibody.com

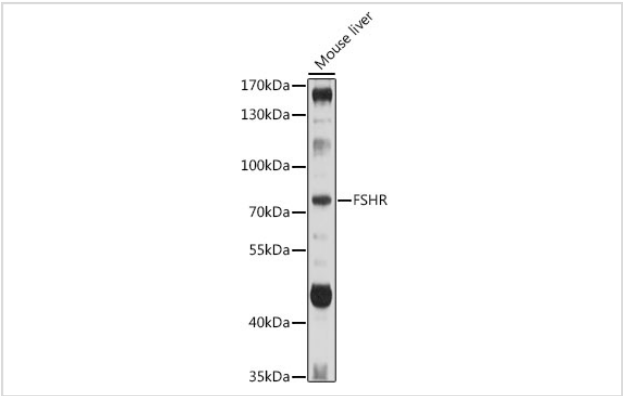
Description

| | |
|-----------------------|--|
| Product Name | FSHR antibody |
| Host Species | Rabbit |
| Clonality | Polyclonal |
| Isotype | IgG |
| Purification | Affinity purification |
| Applications | WB |
| Species Reactivity | Human,Mouse,Rat |
| Specificity | The antibody detects endogenous level of total FSHR protein. |
| Immunogen Type | Recombinant Protein |
| Immunogen Description | Recombinant protein of human FSHR |
| Target Name | FSHR |
| Other Names | FSHR;FSHR1;FSHRO;LGR1;ODG1 |
| Accession No. | Uniprot:P23945GeneID:2492 |
| Uniprot | P23945 |
| GeneID | 2492 |
| SDS-PAGE MW | 75kDa |
| Concentration | 1.0mg/ml |
| Formulation | PBS with 0.02% sodium azide,50% glycerol,pH7.3. |
| Storage | Store at -20°C. Avoid freeze / thaw cycles. |

Application Details

WB 1:500 - 1:2000

Images



Western blot analysis of extracts of Mouse liver, using FSHR antibody.

Background

The protein encoded by this gene belongs to family 1 of G-protein coupled receptors. It is the receptor for follicle stimulating hormone and functions in gonad development. Mutations in this gene cause ovarian dysgenesis type 1, and also ovarian hyperstimulation syndrome. Alternative splicing results in multiple transcript variants.

Note: This product is for in vitro research use only