

PELP1 antibody

Catalog No: #38628



Package Size: #38628-1 50ul #38628-2 100ul

Orders: order@signalwayantibody.com
Support: tech@signalwayantibody.com

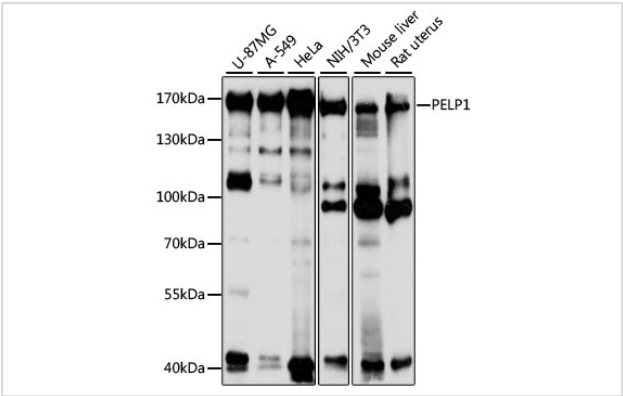
Description

Product Name	PELP1 antibody
Host Species	Rabbit
Clonality	Polyclonal
Purification	Antibodies were purified by affinity purification using immunogen.
Applications	WB,IHC,IF
Species Reactivity	Human,Mouse,Rat
Specificity	The antibody detects endogenous level of total PELP1 protein.
Immunogen Type	Recombinant Protein
Immunogen Description	Recombinant protein of human PELP1.
Target Name	PELP1
Other Names	MNAR; P160;
Accession No.	Swiss-Prot#: Q8IZL8NCBI Gene ID: 27043
Uniprot	Q8IZL8
GeneID	27043;
SDS-PAGE MW	119kd
Concentration	1.0mg/ml
Formulation	Supplied at 1.0mg/mL in phosphate buffered saline (without Mg2+ and Ca2+), pH 7.4, 150mM NaCl, 0.02% sodium azide and 50% glycerol.
Storage	Store at -20°C

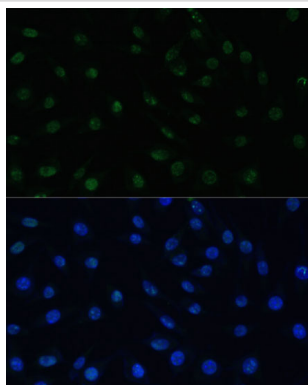
Application Details

WB 1:500 - 1:2000IHC 1:50 - 1:100IF 1:50 - 1:100

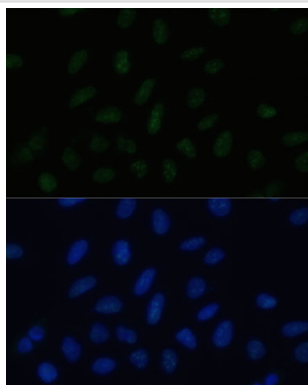
Images



Western blot analysis of extracts of various cell lines, using PELP1 at 1:1000 dilution.



Immunofluorescence analysis of L929 cells using PELP1 Polyclonal at dilution of 1:100 (40x lens). Blue: DAPI for nuclear staining.



Immunofluorescence analysis of U-2 OS cells using PELP1 Polyclonal at dilution of 1:100 (40x lens). Blue: DAPI for nuclear staining.

Background

This gene encodes a transcription factor which coactivates transcription of estrogen receptor responsive genes and corepresses genes activated by other hormone receptors or sequence-specific transcription factors. Expression of this gene is regulated by both members of the estrogen receptor family. This gene may be involved in the progression of several types of cancer. Alternative splicing results in multiple transcript variants.

Note: This product is for in vitro research use only