

## beta-Gal antibody

Catalog No: #22355

Orders: [order@signalwayantibody.com](mailto:order@signalwayantibody.com)Support: [tech@signalwayantibody.com](mailto:tech@signalwayantibody.com)

## Description

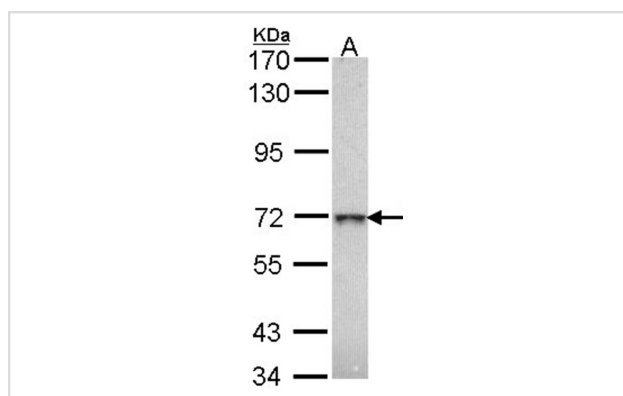
Product Name	beta-Gal antibody
Host Species	Rabbit
Clonality	Polyclonal
Purification	Purified by antigen-affinity chromatography.
Applications	WB
Species Reactivity	Hu
Immunogen Type	Recombinant protein
Immunogen Description	Recombinant protein fragment contain a sequence corresponding to a region within amino acids 166 and 652 of Human GLB1
Target Name	beta-Gal
Accession No.	Swiss-Prot:P16278Gene ID:2720
Uniprot	P16278
GeneID	2720;
Concentration	1mg/ml
Formulation	Supplied in 0.1M Tris-buffered saline with 20% Glycerol (pH7.0). 0.01% Thimerosal was added as a preservative.
Storage	Store at -20°C for long term preservation (recommended). Store at 4°C for short term use.

## Application Details

Predicted MW: 76kd

Western blotting: 1:500-1:3000

## Images



Sample (30 ug of whole cell lysate)  
A: H1299  
7.5% SDS PAGE  
Primary antibody diluted at 1: 1000

## Background

This gene encodes beta-galactosidase-1, a lysosomal enzyme that hydrolyzes the terminal beta-galactose from ganglioside substrates and other glycoconjugates. Defects in this gene are the cause of GM1-gangliosidosis and Morquio B syndrome. Multiple transcript variants encoding different

isoforms have been found for this gene. [provided by RefSeq]

---

Note: This product is for in vitro research use only