

# FHL1 antibody

Catalog No: #38659



Package Size: #38659-1 50ul #38659-2 100ul

Orders: [order@signalwayantibody.com](mailto:order@signalwayantibody.com)  
Support: [tech@signalwayantibody.com](mailto:tech@signalwayantibody.com)

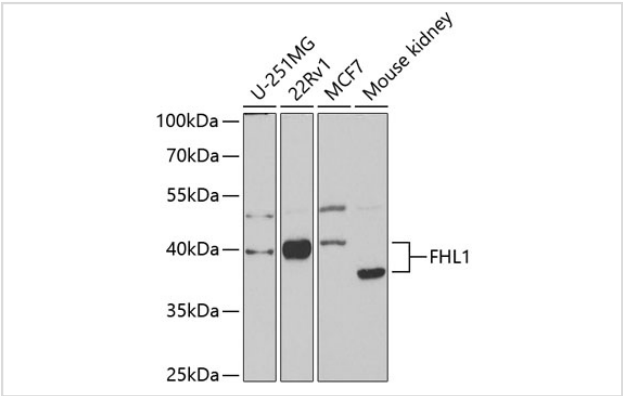
## Description

Product Name	FHL1 antibody
Host Species	Rabbit
Clonality	Polyclonal
Isotype	IgG
Purification	Affinity purification
Applications	WB
Species Reactivity	Human,Mouse
Specificity	The antibody detects endogenous level of total FHL1 protein.
Immunogen Type	Recombinant Protein
Immunogen Description	Recombinant fusion protein of human FHL1 (NP_001153171.1).
Target Name	FHL1
Other Names	FHL1;FHL-1;FHL1A;FHL1B;FLH1A;KYOT;RBMX1A;RBMX1B;SLIM;SLIM-1;SLIM1;SLIMMER;XMPMA
Accession No.	Uniprot:Q13642GeneID:2273
Uniprot	Q13642
GeneID	2273
SDS-PAGE MW	40kDa
Concentration	1.0mg/ml
Formulation	PBS with 0.02% sodium azide,50% glycerol,pH7.3.
Storage	Store at -20°C. Avoid freeze / thaw cycles.

## Application Details

WB 1:500 - 1:2000

## Images



Western blot analysis of extracts of various cell lines, using FHL1 antibody.

## Background

---

This gene encodes a member of the four-and-a-half-LIM-only protein family. Family members contain two highly conserved, tandemly arranged, zinc finger domains with four highly conserved cysteines binding a zinc atom in each zinc finger. Expression of these family members occurs in a cell- and tissue-specific mode and these proteins are involved in many cellular processes. Mutations in this gene have been found in patients with Emery-Dreifuss muscular dystrophy. Multiple alternately spliced transcript variants which encode different protein isoforms have been described.

---

Note: This product is for in vitro research use only