

## MTR4 antibody

Catalog No: #38672

Package Size: #38672-1 50ul #38672-2 100ul

Orders: [order@signalwayantibody.com](mailto:order@signalwayantibody.com)Support: [tech@signalwayantibody.com](mailto:tech@signalwayantibody.com)

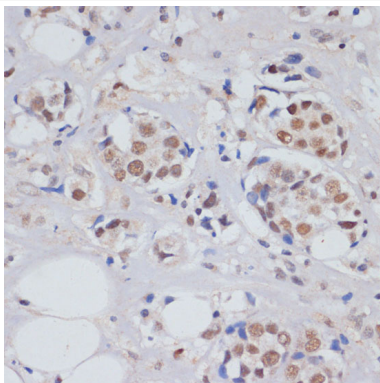
## Description

|                       |  |
|-----------------------|--|
| Product Name          | MTR4 antibody  |
| Host Species          | Rabbit   |
| Clonality             | Polyclonal   |
| Purification          | Antibodies were purified by affinity purification using immunogen.   |
| Applications          | WB,IHC   |
| Species Reactivity    | Human,Mouse  |
| Specificity           | The antibody detects endogenous level of total MTR4 protein.   |
| Immunogen Type        | Recombinant Protein  |
| Immunogen Description | Recombinant protein of human MTR4.   |
| Target Name           | MTR4   |
| Other Names           | Dob1; Mtr4; fSAP118; KIAA0052;   |
| Accession No.         | Swiss-Prot#: P42285NCBI Gene ID: 23517   |
| Uniprot               | P42285   |
| GeneID                | 23517;   |
| SDS-PAGE MW           | 118kd  |
| Concentration         | 1.0mg/ml   |
| Formulation           | Supplied at 1.0mg/mL in phosphate buffered saline (without Mg <sup>2+</sup> and Ca <sup>2+</sup> ), pH 7.4, 150mM NaCl, 0.02% sodium azide and 50% glycerol. |
| Storage               | Store at -20°C   |

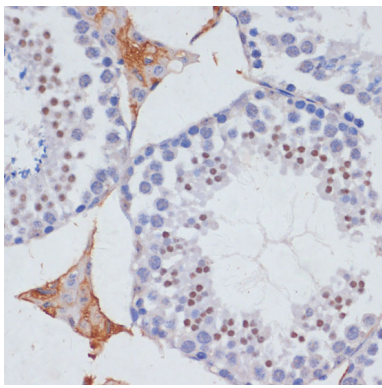
## Application Details

WB□1:500 - 1:2000IHC□1:50 - 1:200IP□1:50 - 1:200

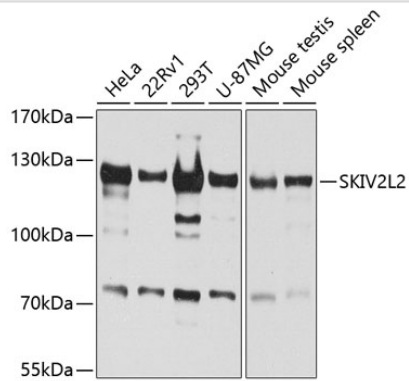
## Images



Immunohistochemistry of paraffin-embedded human breast cancer using SKIV2L2 at dilution of 1:100 (40x lens).



Immunohistochemistry of paraffin-embedded mouse testis using SKIV2L2 at dilution of 1:100 (40x lens).



Western blot analysis of extracts of various cell lines, using SKIV2L2 at 1:1000 dilution.

## Background

May be involved in pre-mRNA splicing. Associated with the RNA exosome complex and involved in the 3'-processing of the 7S pre-rRNA to the mature 5.8S rRNA.

Note: This product is for in vitro research use only