

EPC1 antibody

Catalog No: #38692

Package Size: #38692-1 50ul #38692-2 100ul

Orders: order@signalwayantibody.comSupport: tech@signalwayantibody.com

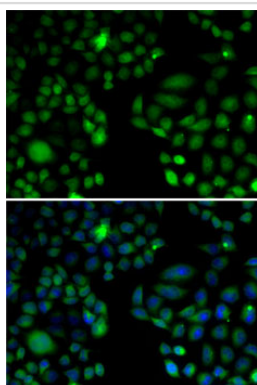
Description

Product Name	EPC1 antibody
Host Species	Rabbit
Clonality	Polyclonal
Purification	Antibodies were purified by affinity purification using immunogen.
Applications	WB,IF
Species Reactivity	Human,Mouse
Specificity	The antibody detects endogenous level of total EPC1 protein.
Immunogen Type	Recombinant Protein
Immunogen Description	Recombinant protein of human EPC1.
Target Name	EPC1
Other Names	Epl1;
Accession No.	Swiss-Prot#: Q9H2F5NCBI Gene ID: 80314
Uniprot	Q9H2F5
GeneID	80314;
SDS-PAGE MW	93kd
Concentration	1.0mg/ml
Formulation	Supplied at 1.0mg/mL in phosphate buffered saline (without Mg ²⁺ and Ca ²⁺), pH 7.4, 150mM NaCl, 0.02% sodium azide and 50% glycerol.
Storage	Store at -20°C

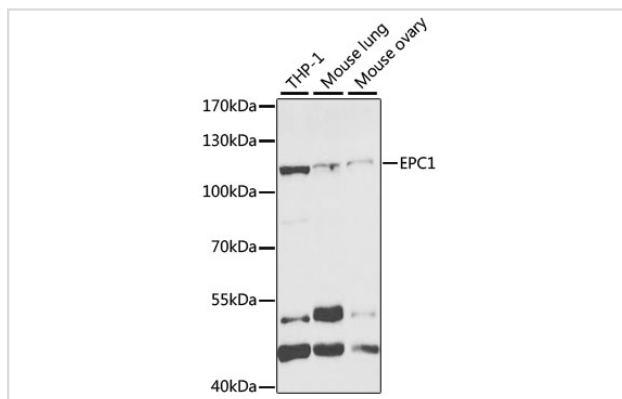
Application Details

WB□1:500 - 1:2000IF□1:50 - 1:100

Images



Immunofluorescence analysis of U2OS cells using EPC1 .
Blue: DAPI for nuclear staining.



Western blot analysis of extracts of various cell lines, using EPC1 at 1:1000 dilution.

Background

This gene encodes a member of the polycomb group (PcG) family. The encoded protein is a component of the NuA4 histone acetyltransferase complex and can act as both a transcriptional activator and repressor. The encoded protein has been linked to apoptosis, DNA repair, skeletal muscle differentiation, gene silencing, and adult T-cell leukemia/lymphoma. Alternative splicing results in multiple transcript variants.

Note: This product is for in vitro research use only