

KTN1 antibody

Catalog No: #38704

Package Size: #38704-1 50ul #38704-2 100ul

Orders: order@signalwayantibody.comSupport: tech@signalwayantibody.com

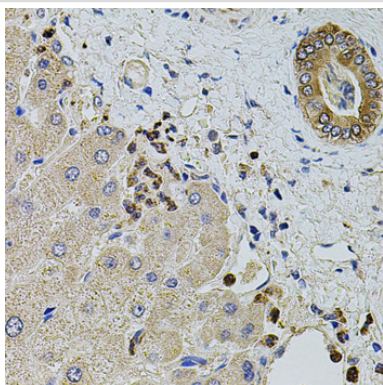
Description

| | |
|-----------------------|--|
| Product Name | KTN1 antibody |
| Host Species | Rabbit |
| Clonality | Polyclonal |
| Purification | Antibodies were purified by affinity purification using immunogen. |
| Applications | WB,IHC |
| Species Reactivity | Human |
| Specificity | The antibody detects endogenous level of total KTN1 protein. |
| Immunogen Type | Recombinant Protein |
| Immunogen Description | Recombinant protein of human KTN1. |
| Target Name | KTN1 |
| Other Names | CG1; KNT; MU-RMS-40.19; |
| Accession No. | Swiss-Prot#: Q86UP2NCBI Gene ID: 3895 |
| Uniprot | Q86UP2 |
| GeneID | 3895; |
| SDS-PAGE MW | 156kd |
| Concentration | 1.0mg/ml |
| Formulation | Supplied at 1.0mg/mL in phosphate buffered saline (without Mg ²⁺ and Ca ²⁺), pH 7.4, 150mM NaCl, 0.02% sodium azide and 50% glycerol. |
| Storage | Store at -20°C |

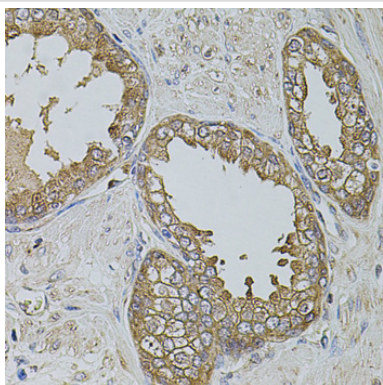
Application Details

WB□1:500 - 1:2000IHC□1:50 - 1:200

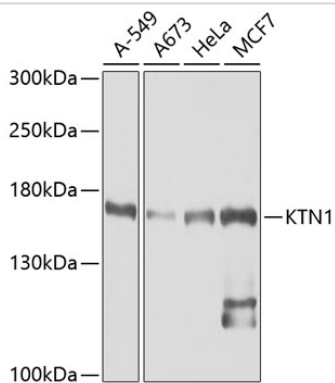
Images



Immunohistochemistry of paraffin-embedded human liver damage using KTN1 at dilution of 1:100 (40x lens).



Immunohistochemistry of paraffin-embedded human prostate using KTN1 at dilution of 1:100 (40x lens).



Western blot analysis of extracts of various cell lines, using KTN1 at 1:1000 dilution.

Background

This gene encodes an integral membrane protein that is a member of the kinectin protein family. The encoded protein is primarily localized to the endoplasmic reticulum membrane. This protein binds kinesin and may be involved in intracellular organelle motility. This protein also binds translation elongation factor-delta and may be involved in the assembly of the elongation factor-1 complex. Alternate splicing results in multiple transcript variants of this gene.

Note: This product is for in vitro research use only