

RPS12 antibody

Catalog No: #38711

Package Size: #38711-1 50ul #38711-2 100ul

Orders: order@signalwayantibody.comSupport: tech@signalwayantibody.com

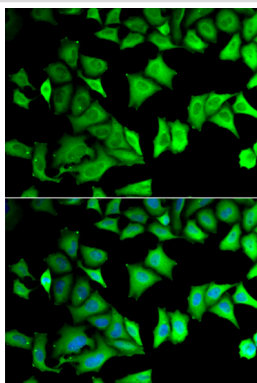
Description

| | |
|-----------------------|---|
| Product Name | RPS12 antibody |
| Host Species | Rabbit |
| Clonality | Polyclonal |
| Isotype | IgG |
| Purification | Affinity purification |
| Applications | WB,IF |
| Species Reactivity | Human,Mouse,Rat |
| Specificity | The antibody detects endogenous level of total RPS12 protein. |
| Immunogen Type | Recombinant Protein |
| Immunogen Description | Recombinant fusion protein of human RPS12 (NP_001007.2). |
| Target Name | RPS12 |
| Other Names | RPS12;S12 |
| Accession No. | Uniprot:P25398GeneID:6206 |
| Uniprot | P25398 |
| GeneID | 6206 |
| SDS-PAGE MW | 15kDa |
| Concentration | 1.0mg/ml |
| Formulation | PBS with 0.02% sodium azide,50% glycerol,pH7.3. |
| Storage | Store at -20°C. Avoid freeze / thaw cycles. |

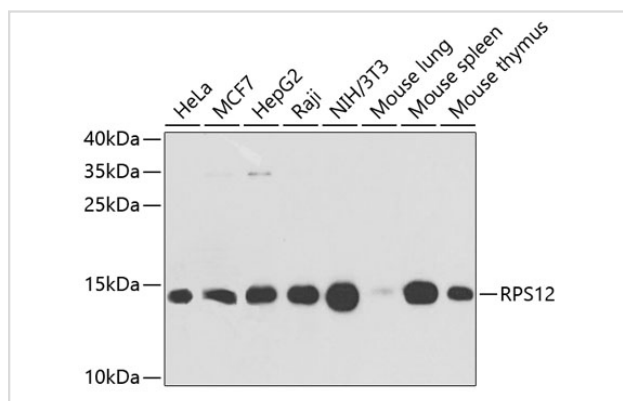
Application Details

WB□1:500 - 1:2000IF□1:10 - 1:100

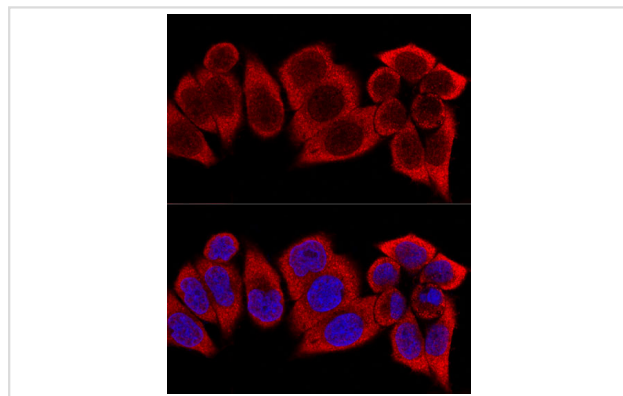
Images



Immunofluorescence analysis of MCF-7 cells using RPS12 antibody.



Western blot analysis of extracts of various cell lines, using RPS12 antibody.



Confocal immunofluorescence analysis of HeLa cells using RPS12 Polyclonal Antibody.

Background

Ribosomes, the organelles that catalyze protein synthesis, consist of a small 40S subunit and a large 60S subunit. Together these subunits are composed of 4 RNA species and approximately 80 structurally distinct proteins. This gene encodes a ribosomal protein that is a component of the 40S subunit. The protein belongs to the S12E family of ribosomal proteins. It is located in the cytoplasm. Increased expression of this gene in colorectal cancers compared to matched normal colonic mucosa has been observed. As is typical for genes encoding ribosomal proteins, there are multiple processed pseudogenes of this gene dispersed through the genome.

Note: This product is for in vitro research use only