

APEH antibody

Catalog No: #38714



Package Size: #38714-1 50ul #38714-2 100ul

Orders: order@signalwayantibody.com
Support: tech@signalwayantibody.com

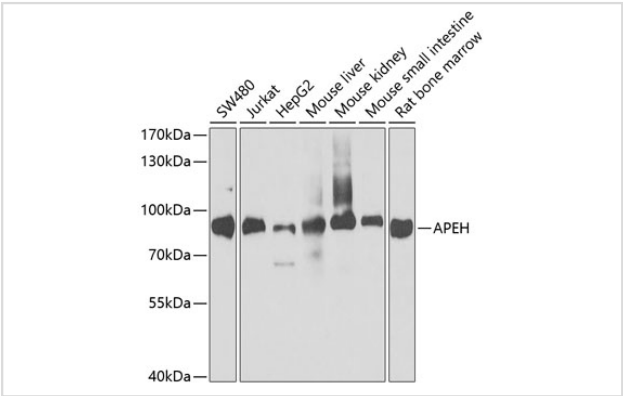
Description

Product Name	APEH antibody
Host Species	Rabbit
Clonality	Polyclonal
Purification	Antibodies were purified by affinity purification using immunogen.
Applications	WB
Species Reactivity	Human,Mouse,Rat
Specificity	The antibody detects endogenous level of total APEH protein.
Immunogen Type	Recombinant Protein
Immunogen Description	Recombinant protein of human APEH.
Target Name	APEH
Other Names	APH; OPH; AARE; ACPH; D3S48E; D3F15S2; DNF15S2;
Accession No.	Swiss-Prot#: P13798NCBI Gene ID: 327
Uniprot	P13798
GeneID	327;
SDS-PAGE MW	81kd
Concentration	1.0mg/ml
Formulation	Supplied at 1.0mg/mL in phosphate buffered saline (without Mg2+ and Ca2+), pH 7.4, 150mM NaCl, 0.02% sodium azide and 50% glycerol.
Storage	Store at -20°C

Application Details

WB 1:500 - 1:2000IP 1:20 - 1:50

Images



Western blot analysis of extracts of various cell lines, using APEH at 1:1000 dilution.

Background

This gene encodes the enzyme acylpeptide hydrolase, which catalyzes the hydrolysis of the terminal acetylated amino acid preferentially from small acetylated peptides. The acetyl amino acid formed by this hydrolase is further processed to acetate and a free amino acid by an aminoacylase. This gene is located within the same region of chromosome 3 (3p21) as the aminoacylase gene, and deletions at this locus are also associated with a decrease in aminoacylase activity. The acylpeptide hydrolase is a homotetrameric protein of 300 kDa with each subunit consisting of 732 amino acid residues. It can play an important role in destroying oxidatively damaged proteins in living cells. Deletions of this gene locus are found in various types of carcinomas, including small cell lung carcinoma and renal cell carcinoma.

Note: This product is for in vitro research use only