

## ENTPD3 antibody

Catalog No: #22361

Orders: [order@signalwayantibody.com](mailto:order@signalwayantibody.com)Support: [tech@signalwayantibody.com](mailto:tech@signalwayantibody.com)

## Description

Product Name	ENTPD3 antibody
Host Species	Rabbit
Clonality	Polyclonal
Purification	Purified by antigen-affinity chromatography.
Applications	WB IHC
Species Reactivity	Hu
Immunogen Type	Recombinant protein
Immunogen Description	Recombinant protein fragment contain a sequence corresponding to a region within amino acids 200 and 429 of Human ENTPD3
Target Name	ENTPD3
Accession No.	Swiss-Prot:O75355Gene ID:956
Uniprot	O75355
GeneID	956;
Concentration	0.4mg/ml
Formulation	Supplied in 0.1M Tris-buffered saline with 10% Glycerol (pH7.0). 0.01% Thimerosal was added as a preservative.
Storage	Store at -20°C for long term preservation (recommended). Store at 4°C for short term use.

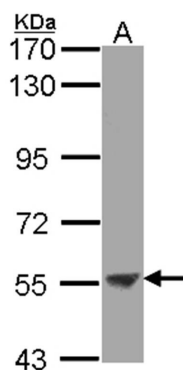
## Application Details

Predicted MW: 59kd

Western blotting: 1:500-1:3000

Immunohistochemistry: 1:50-1:500

## Images

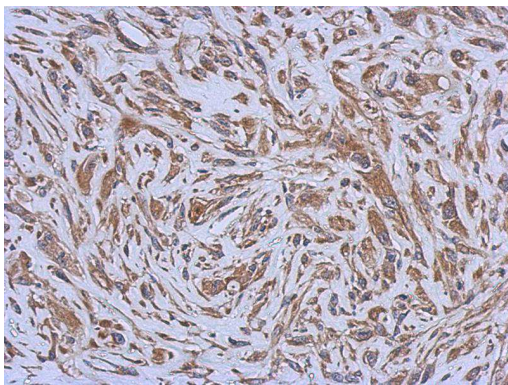


Sample (30 ug of whole cell lysate)

A: Molt-4

7.5% SDS PAGE

Primary antibody diluted at 1: 2000



Immunohistochemical analysis of paraffin-embedded U373 xenograft, using ENTPD3 antibody at 1: 500 dilution.

## Background

ENTPD3 is similar to E-type nucleotidases (NTPases). NTPases, such as CD39, mediate catabolism of extracellular nucleotides. ENTPD3 contains 4 apyrase-conserved regions which is characteristic of NTPases. [provided by RefSeq]

Note: This product is for in vitro research use only