

## CTH antibody

Catalog No: #38719

Package Size: #38719-1 50ul #38719-2 100ul

Orders: [order@signalwayantibody.com](mailto:order@signalwayantibody.com)Support: [tech@signalwayantibody.com](mailto:tech@signalwayantibody.com)

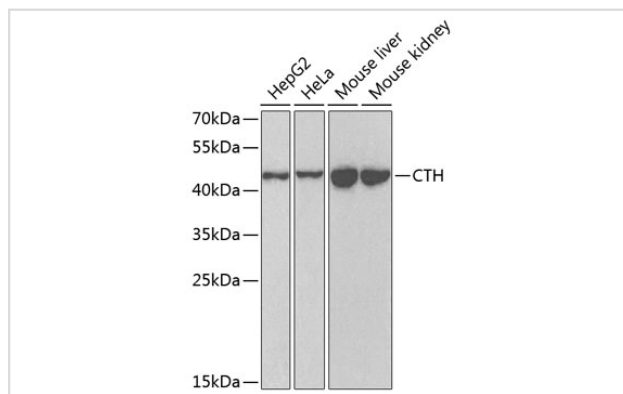
## Description

Product Name	CTH antibody
Host Species	Rabbit
Clonality	Polyclonal
Purification	Antibodies were purified by affinity purification using immunogen.
Applications	WB
Species Reactivity	Human, Mouse
Specificity	The antibody detects endogenous level of total CTH protein.
Immunogen Type	Recombinant Protein
Immunogen Description	Recombinant protein of human CTH.
Target Name	CTH
Accession No.	Swiss-Prot#: P32929NCBI Gene ID: 1491
Uniprot	P32929
GeneID	1491;
SDS-PAGE MW	44kd
Concentration	1.0mg/ml
Formulation	Supplied at 1.0mg/mL in phosphate buffered saline (without Mg <sup>2+</sup> and Ca <sup>2+</sup> ), pH 7.4, 150mM NaCl, 0.02% sodium azide and 50% glycerol.
Storage	Store at -20°C

## Application Details

WB 1:500 - 1:2000

## Images



Western blot analysis of extracts of various cell lines, using CTH at 1:1000 dilution.

## Background

This gene encodes a cytoplasmic enzyme in the trans-sulfuration pathway that converts cystathione derived from methionine into cysteine. Glutathione

synthesis in the liver is dependent upon the availability of cysteine. Mutations in this gene cause cystathioninuria. Alternative splicing of this gene results in three transcript variants encoding different isoforms.

---

Note: This product is for in vitro research use only