

SET antibody

Catalog No: #38752

Package Size: #38752-1 50ul #38752-2 100ul

Orders: order@signalwayantibody.comSupport: tech@signalwayantibody.com

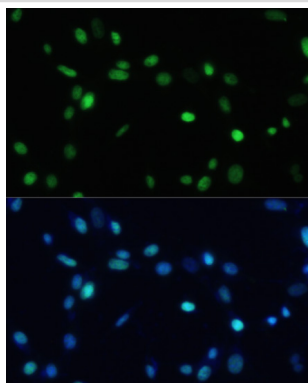
Description

Product Name	SET antibody
Host Species	Rabbit
Clonality	Polyclonal
Purification	Antibodies were purified by affinity purification using immunogen.
Applications	WB,IHC,IF
Species Reactivity	Human,Mouse,Rat
Specificity	The antibody detects endogenous level of total SET protein.
Immunogen Type	Recombinant Protein
Immunogen Description	Recombinant protein of human SET.
Target Name	SET
Other Names	2PP2A; IGAAD; TAF-I; I2PP2A; IPP2A2; PHAPII; TAF-IBETA;
Accession No.	Swiss-Prot#: Q01105NCBI Gene ID: 6418
Uniprot	Q01105
GeneID	6418;
SDS-PAGE MW	33kd
Concentration	1.0mg/ml
Formulation	Supplied at 1.0mg/mL in phosphate buffered saline (without Mg ²⁺ and Ca ²⁺), pH 7.4, 150mM NaCl, 0.02% sodium azide and 50% glycerol.
Storage	Store at -20°C

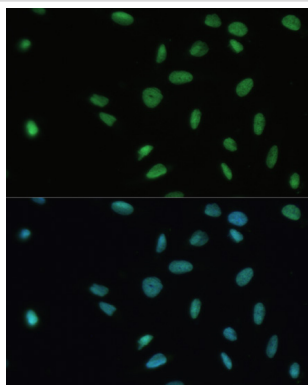
Application Details

WB□1:500 - 1:2000IHC□1:50 - 1:200IF□1:50 - 1:200

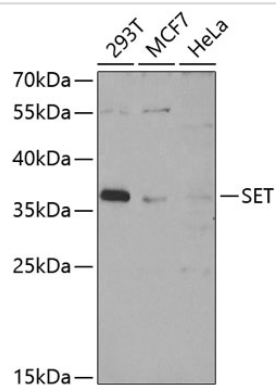
Images



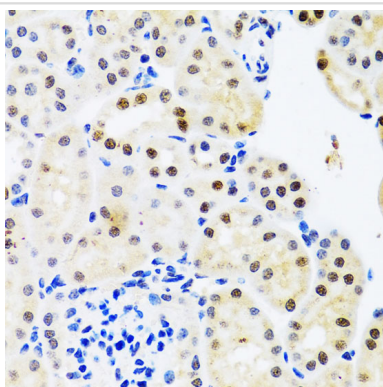
Immunofluorescence analysis of NIH-3T3 cells using SET at dilution of 1:100. Blue: DAPI for nuclear staining.



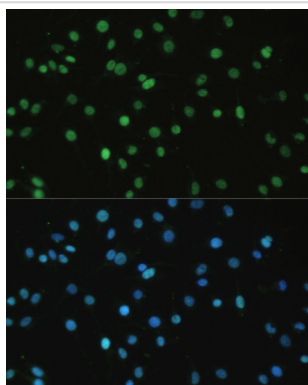
Immunofluorescence analysis of U-2 OS cells using SET at dilution of 1:100. Blue: DAPI for nuclear staining.



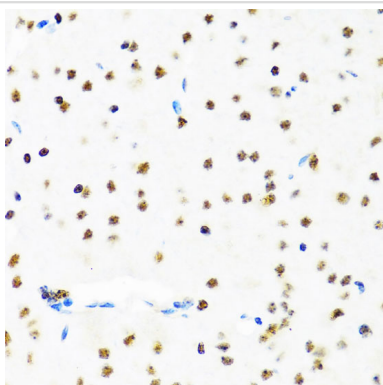
Western blot analysis of extracts of various cell lines, using SET at 1:1000 dilution.



Immunohistochemistry of paraffin-embedded mouse kidney using SET at dilution of 1:100 (40x lens).



Immunofluorescence analysis of C6 cells using SET at dilution of 1:100. Blue: DAPI for nuclear staining.



Immunohistochemistry of paraffin-embedded mouse brain using SET at dilution of 1:100 (40x lens).

Background

The protein encoded by this gene inhibits acetylation of nucleosomes, especially histone H4, by histone acetylases (HAT). This inhibition is most likely accomplished by masking histone lysines from being acetylated, and the consequence is to silence HAT-dependent transcription. The encoded protein is part of a complex localized to the endoplasmic reticulum but is found in the nucleus and inhibits apoptosis following attack by cytotoxic T lymphocytes. This protein can also enhance DNA replication of the adenovirus genome. Several transcript variants encoding different isoforms have been found for this gene.

Note: This product is for in vitro research use only