

GIP antibody

Catalog No: #38763

Package Size: #38763-1 50ul #38763-2 100ul

Orders: order@signalwayantibody.comSupport: tech@signalwayantibody.com

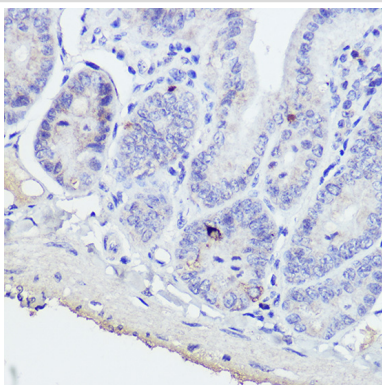
Description

Product Name	GIP antibody
Host Species	Rabbit
Clonality	Polyclonal
Isotype	IgG
Purification	Affinity purification
Applications	WB,IHC
Species Reactivity	Human,Mouse,Rat
Specificity	The antibody detects endogenous level of total GIP protein.
Immunogen Type	Recombinant Protein
Immunogen Description	Recombinant fusion protein of human GIP (NP_004114.1).
Target Name	GIP
Other Names	GIP
Accession No.	Uniprot:P09681GeneID:2695
Uniprot	P09681
GeneID	2695
SDS-PAGE MW	17KDa
Concentration	1.0mg/ml
Formulation	PBS with 0.02% sodium azide,50% glycerol,pH7.3.
Storage	Store at -20°C. Avoid freeze / thaw cycles.

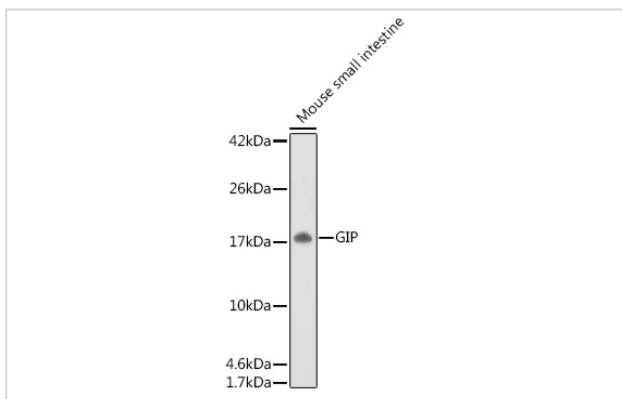
Application Details

WB□1:500 - 1:2000IHC□1:50 - 1:200

Images



Immunohistochemistry of paraffin-embedded mouse intestine using GIP Rabbit pAb.



Western blot analysis of extracts of Mouse small intestine, using GIP antibody.

Background

This gene encodes an incretin hormone and belongs to the glucagon superfamily. The encoded protein is important in maintaining glucose homeostasis as it is a potent stimulator of insulin secretion from pancreatic beta-cells following food ingestion and nutrient absorption. This gene stimulates insulin secretion via its G protein-coupled receptor activation of adenylyl cyclase and other signal transduction pathways. It is a relatively poor inhibitor of gastric acid secretion.

Note: This product is for in vitro research use only