

BTD antibody

Catalog No: #38793

Package Size: #38793-1 50ul #38793-2 100ul

Orders: order@signalwayantibody.comSupport: tech@signalwayantibody.com

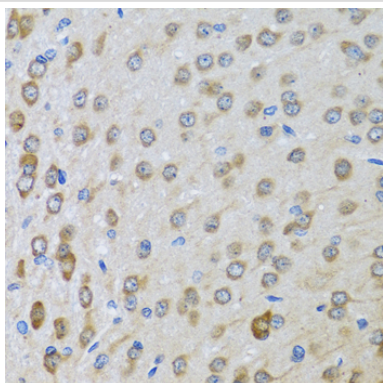
Description

Product Name	BTD antibody
Host Species	Rabbit
Clonality	Polyclonal
Purification	Antibodies were purified by affinity purification using immunogen.
Applications	WB,IHC
Species Reactivity	Human,Mouse,Rat
Specificity	The antibody detects endogenous level of total BTD protein.
Immunogen Type	Recombinant Protein
Immunogen Description	Recombinant protein of human BTD.
Target Name	BTD
Accession No.	Swiss-Prot#: P43251NCBI Gene ID: 686
Uniprot	P43251
GeneID	686;
SDS-PAGE MW	61kd
Concentration	1.0mg/ml
Formulation	Supplied at 1.0mg/mL in phosphate buffered saline (without Mg ²⁺ and Ca ²⁺), pH 7.4, 150mM NaCl, 0.02% sodium azide and 50% glycerol.
Storage	Store at -20°C

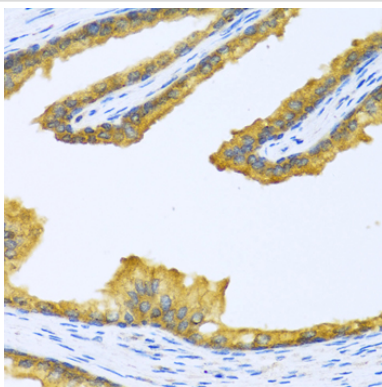
Application Details

WB 1:500 - 1:2000IHC 1:100 - 1:200

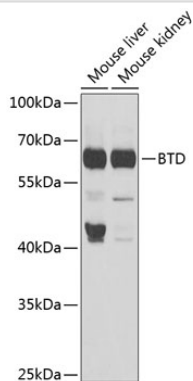
Images



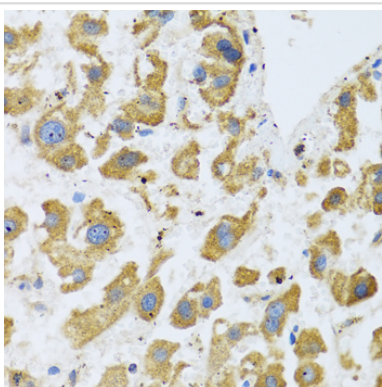
Immunohistochemistry of paraffin-embedded rat brain using BTD at dilution of 1:100 (40x lens).



Immunohistochemistry of paraffin-embedded human prostate using BTBD9 at dilution of 1:100 (40x lens).



Western blot analysis of extracts of various cell lines, using BTBD9 at 1:1000 dilution.



Immunohistochemistry of paraffin-embedded human liver cancer using BTBD9 at dilution of 1:100 (40x lens).

Background

The protein encoded by this gene functions to recycle protein-bound biotin by cleaving biocytin (biotin-epsilon-lysine), a normal product of carboxylase degradation, resulting in regeneration of free biotin. The encoded protein has also been shown to have biotinyl transferase activity. Mutations in this gene are associated with biotinidase deficiency. Multiple transcript variants encoding different isoforms have been described.

Note: This product is for in vitro research use only