

CISH antibody

Catalog No: #38795

Package Size: #38795-1 50ul #38795-2 100ul

Orders: order@signalwayantibody.comSupport: tech@signalwayantibody.com

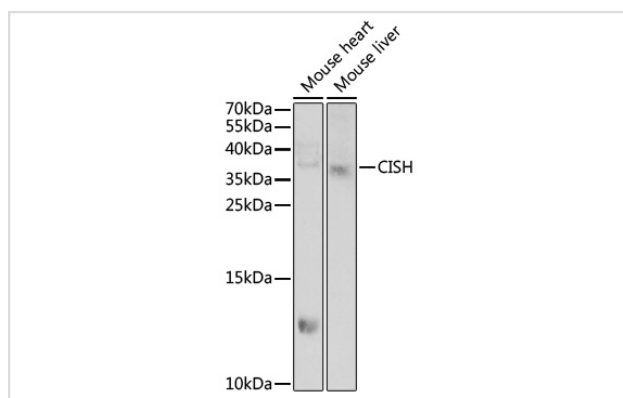
Description

Product Name	CISH antibody
Host Species	Rabbit
Clonality	Polyclonal
Purification	Antibodies were purified by affinity purification using immunogen.
Applications	WB
Species Reactivity	Mouse,Rat
Specificity	The antibody detects endogenous level of total CISH protein.
Immunogen Type	Recombinant Protein
Immunogen Description	Recombinant protein of human CISH.
Target Name	CISH
Other Names	CIS; G18; SOCS; CIS-1; BACTS2;
Accession No.	Swiss-Prot#: Q9NSE2NCBI Gene ID: 1154
Uniprot	Q9NSE2
GeneID	1154;
SDS-PAGE MW	28kd
Concentration	1.0mg/ml
Formulation	Supplied at 1.0mg/mL in phosphate buffered saline (without Mg ²⁺ and Ca ²⁺), pH 7.4, 150mM NaCl, 0.02% sodium azide and 50% glycerol.
Storage	Store at -20°C

Application Details

WB 1:500 - 1:2000

Images



Western blot analysis of extracts of various cell lines, using CISH at 1:1000 dilution.

Background

The protein encoded by this gene contains a SH2 domain and a SOCS box domain. The protein thus belongs to the cytokine-induced STAT inhibitor (CIS), also known as suppressor of cytokine signaling (SOCS) or STAT-induced STAT inhibitor (SSI), protein family. CIS family members are known to be cytokine-inducible negative regulators of cytokine signaling. The expression of this gene can be induced by IL2, IL3, GM-CSF and EPO in hematopoietic cells. Proteasome-mediated degradation of this protein has been shown to be involved in the inactivation of the erythropoietin receptor. Multiple transcript variants encoding different isoforms have been found for this gene.

Note: This product is for in vitro research use only