

MLANA antibody

Catalog No: #38798



Package Size: #38798-1 50ul #38798-2 100ul

Orders: order@signalwayantibody.com
Support: tech@signalwayantibody.com

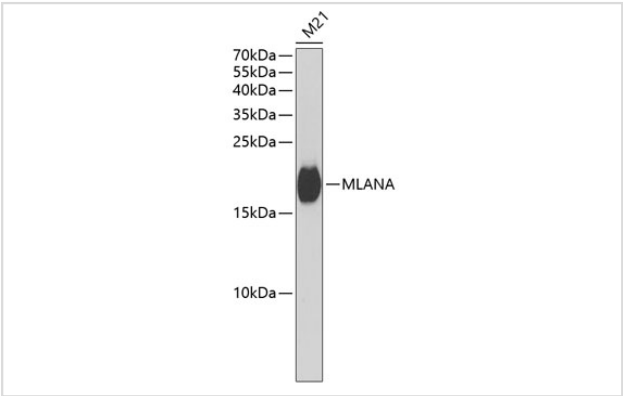
Description

Product Name	MLANA antibody
Host Species	Rabbit
Clonality	Polyclonal
Purification	Antibodies were purified by affinity purification using immunogen.
Applications	WB,IF
Species Reactivity	Human,Mouse,Rat
Specificity	The antibody detects endogenous level of total MLANA protein.
Immunogen Type	Recombinant Protein
Immunogen Description	Recombinant protein of human MLANA.
Target Name	MLANA
Other Names	MART1; MART-1;
Accession No.	Swiss-Prot#: Q16655NCBI Gene ID: 2315
Uniprot	Q16655
GeneID	2315;
SDS-PAGE MW	13kd
Concentration	1.0mg/ml
Formulation	Supplied at 1.0mg/mL in phosphate buffered saline (without Mg2+ and Ca2+), pH 7.4, 150mM NaCl, 0.02% sodium azide and 50% glycerol.
Storage	Store at -20°C

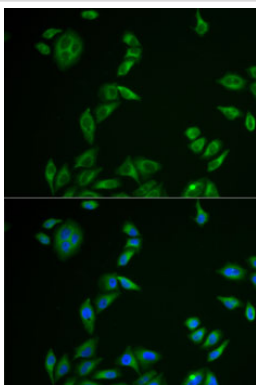
Application Details

WB 1:500 - 1:2000IF 1:50 - 1:200

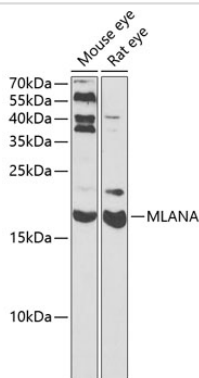
Images



Western blot analysis of extracts of M21 cells, using MLANA at 1:1000 dilution._Secondary antibody: HRP Goat Anti-Rabbit IgG (H+L) at 1:10000 dilution._Lysates/proteins: 25ug per lane._Blocking buffer: 3% nonfat dry milk in TBST._Detection: ECL Basic Kit (RM00020)._Exposure time: 90s.



Immunofluorescence analysis of U2OS cells using MLANA .
Blue: DAPI for nuclear staining.



Western blot analysis of extracts of various cell lines, using MLANA at 1:3000 dilution. Secondary antibody: HRP Goat Anti-Rabbit IgG (H+L) at 1:10000 dilution. Lysates/proteins: 25ug per lane. Blocking buffer: 3% nonfat dry milk in TBST. Detection: ECL Enhanced Kit (RM00021). Exposure time: 60s.

Background

Involved in melanosome biogenesis by ensuring the stability of GPR143. Plays a vital role in the expression, stability, trafficking, and processing of melanocyte protein PMEL, which is critical to the formation of stage II melanosomes.

Note: This product is for in vitro research use only