

MDH2 antibody

Catalog No: #38803



Package Size: #38803-1 50ul #38803-2 100ul

Orders: order@signalwayantibody.com
Support: tech@signalwayantibody.com

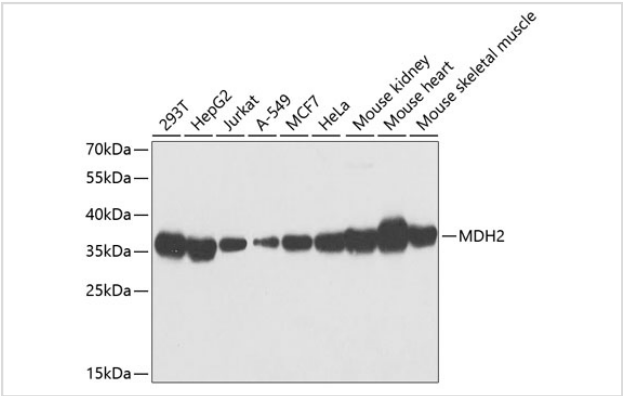
Description

Product Name	MDH2 antibody
Host Species	Rabbit
Clonality	Polyclonal
Isotype	IgG
Purification	Affinity purification
Applications	WB
Species Reactivity	Human,Mouse
Specificity	The antibody detects endogenous level of total MDH2 protein.
Immunogen Type	Recombinant Protein
Immunogen Description	Recombinant fusion protein of human MDH2 (NP_005909.2).
Target Name	MDH2
Other Names	MDH2;EIEE51;M-MDH;MDH;MGC:3559;MOR1
Accession No.	Uniprot:P40926GeneID:4191
Uniprot	P40926
GeneID	4191
SDS-PAGE MW	35kDa
Concentration	1.0mg/ml
Formulation	PBS with 0.02% sodium azide,50% glycerol,pH7.3.
Storage	Store at -20°C. Avoid freeze / thaw cycles.

Application Details

WB 1:500 - 1:2000

Images



Western blot analysis of extracts of various cell lines, using MDH2 antibody.

Background

Malate dehydrogenase catalyzes the reversible oxidation of malate to oxaloacetate, utilizing the NAD/NADH cofactor system in the citric acid cycle. The protein encoded by this gene is localized to the mitochondria and may play pivotal roles in the malate-aspartate shuttle that operates in the metabolic coordination between cytosol and mitochondria. Several transcript variants encoding different isoforms have been found for this gene.

Note: This product is for in vitro research use only