

PC antibody

Catalog No: #38807



Package Size: #38807-1 50ul #38807-2 100ul

Orders: order@signalwayantibody.com
Support: tech@signalwayantibody.com

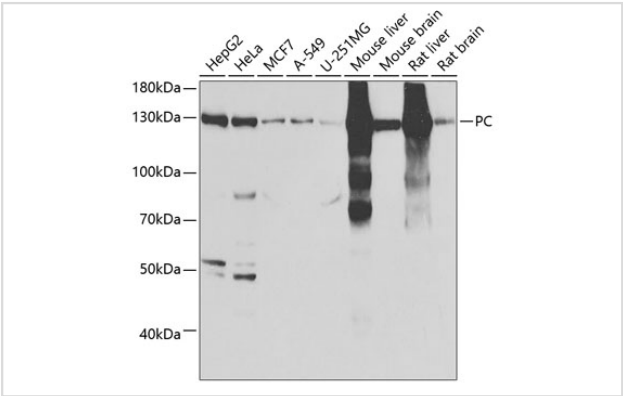
Description

Product Name	PC antibody
Host Species	Rabbit
Clonality	Polyclonal
Purification	Antibodies were purified by affinity purification using immunogen.
Applications	WB,IF
Species Reactivity	Human,Mouse,Rat
Specificity	The antibody detects endogenous level of total PC protein.
Immunogen Type	Recombinant Protein
Immunogen Description	Recombinant protein of human PC.
Target Name	PC
Other Names	PCB;
Accession No.	Swiss-Prot#: P11498NCBI Gene ID: 5091
Uniprot	P11498
GeneID	5091;
SDS-PAGE MW	129kd
Concentration	1.0mg/ml
Formulation	Supplied at 1.0mg/mL in phosphate buffered saline (without Mg2+ and Ca2+), pH 7.4, 150mM NaCl, 0.02% sodium azide and 50% glycerol.
Storage	Store at -20°C

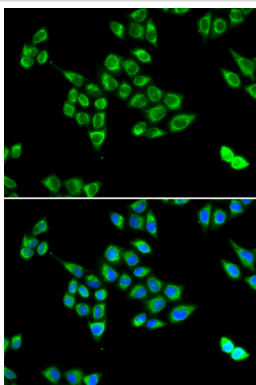
Application Details

WB 1:500 - 1:2000IF 1:10 - 1:100

Images



Western blot analysis of extracts of various cell lines, using PC at 1:1000 dilution.



Immunofluorescence analysis of U2OS cells using PC . Blue: DAPI for nuclear staining.

Background

This gene encodes pyruvate carboxylase, which requires biotin and ATP to catalyse the carboxylation of pyruvate to oxaloacetate. The active enzyme is a homotetramer arranged in a tetrahedron which is located exclusively in the mitochondrial matrix. Pyruvate carboxylase is involved in gluconeogenesis, lipogenesis, insulin secretion and synthesis of the neurotransmitter glutamate. Mutations in this gene have been associated with pyruvate carboxylase deficiency. Alternatively spliced transcript variants with different 5' UTRs, but encoding the same protein, have been found for this gene.

Note: This product is for in vitro research use only