

SOAT1 antibody

Catalog No: #38815



Package Size: #38815-1 50ul #38815-2 100ul

Orders: order@signalwayantibody.com
Support: tech@signalwayantibody.com

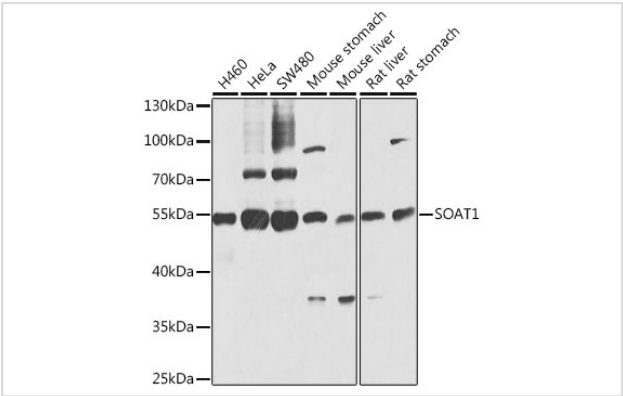
Description

Product Name	SOAT1 antibody
Host Species	Rabbit
Clonality	Polyclonal
Isotype	IgG
Purification	Affinity purification
Applications	WB,IF
Species Reactivity	Human,Mouse,Rat
Specificity	The antibody detects endogenous level of total SOAT1 protein.
Immunogen Type	Recombinant Protein
Immunogen Description	Recombinant fusion protein of human SOAT1 (NP_003092.4).
Target Name	SOAT1
Other Names	SOAT1;ACACT;ACAT;ACAT-1;ACAT1;SOAT;STAT
Accession No.	Uniprot:P35610GeneID:6646
Uniprot	P35610
GeneID	6646
SDS-PAGE MW	55kDa
Concentration	1.0mg/ml
Formulation	PBS with 0.02% sodium azide,50% glycerol,pH7.3.
Storage	Store at -20°C. Avoid freeze / thaw cycles.

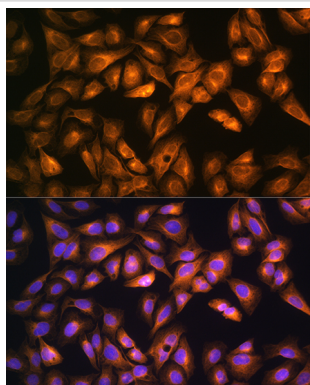
Application Details

WB 1:500 - 1:2000IF 1:50 - 1:200

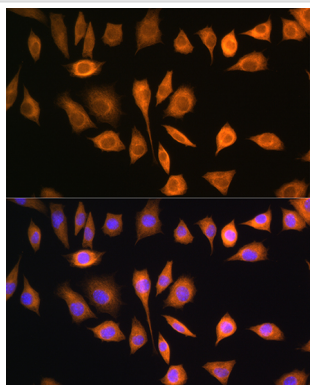
Images



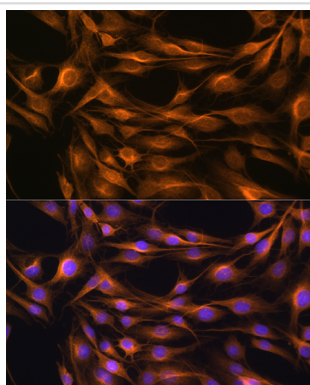
Western blot analysis of extracts of various cell lines, using SOAT1 antibody.



Immunofluorescence analysis of U2OS cells using SOAT1 Rabbit pAb.



Immunofluorescence analysis of L929 cells using SOAT1 Rabbit pAb.



Immunofluorescence analysis of C6 cells using SOAT1 Rabbit pAb.

Background

The protein encoded by this gene belongs to the acyltransferase family. It is located in the endoplasmic reticulum, and catalyzes the formation of fatty acid-cholesterol esters. This gene has been implicated in the formation of beta-amyloid and atherosclerotic plaques by controlling the equilibrium between free cholesterol and cytoplasmic cholesteryl esters. Alternatively spliced transcript variants have been found for this gene.

Note: This product is for in vitro research use only