

UBE2B antibody

Catalog No: #38818



Package Size: #38818-1 50ul #38818-2 100ul

Orders: order@signalwayantibody.com
Support: tech@signalwayantibody.com

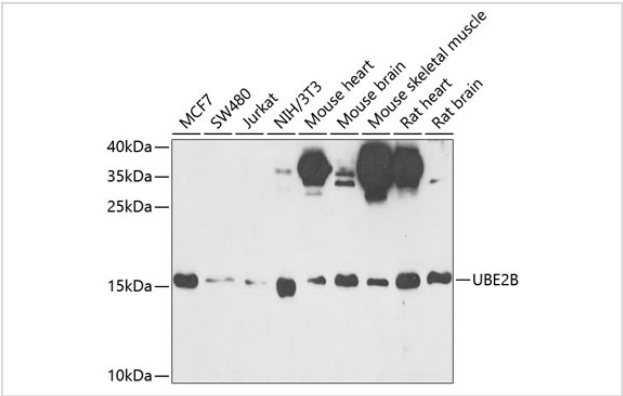
Description

Product Name	UBE2B antibody
Host Species	Rabbit
Clonality	Polyclonal
Isotype	IgG
Purification	Affinity purification
Applications	WB
Species Reactivity	Human,Mouse,Rat
Specificity	The antibody detects endogenous level of total UBE2B protein.
Immunogen Type	Recombinant Protein
Immunogen Description	Recombinant fusion protein of human UBE2B (NP_003328.1).
Target Name	UBE2B
Other Names	UBE2B;E2-17kDa;HHR6B;HR6B;RAD6B;UBC2
Accession No.	Uniprot:P63146GeneID:7320
Uniprot	P63146
GeneID	7320
SDS-PAGE MW	16kDa
Concentration	1.0mg/ml
Formulation	PBS with 0.02% sodium azide,50% glycerol,pH7.3.
Storage	Store at -20°C. Avoid freeze / thaw cycles.

Application Details

WB 1:500 - 1:2000

Images



Western blot analysis of extracts of various cell lines, using UBE2B antibody.

Background

The modification of proteins with ubiquitin is an important cellular mechanism for targeting abnormal or short-lived proteins for degradation. Ubiquitination involves at least three classes of enzymes: ubiquitin-activating enzymes, or E1s, ubiquitin-conjugating enzymes, or E2s, and ubiquitin-protein ligases, or E3s. This gene encodes a member of the E2 ubiquitin-conjugating enzyme family. This enzyme is required for post-replicative DNA damage repair. Its protein sequence is 100% identical to the mouse, rat, and rabbit homologs, which indicates that this enzyme is highly conserved in eukaryotic evolution.

Note: This product is for in vitro research use only