

CKS-2 antibody

Catalog No: #22374

Orders: order@signalwayantibody.comSupport: tech@signalwayantibody.com

Description

Product Name	CKS-2 antibody
Host Species	Rabbit
Clonality	Polyclonal
Purification	Purified by antigen-affinity chromatography.
Applications	WB IF
Species Reactivity	Hu
Immunogen Type	Peptide
Immunogen Description	Synthetic peptide contain a sequence corresponding to a region within amino acids 15 and 79 of Human CKS2
Target Name	CKS-2
Accession No.	Swiss-Prot:P33552Gene ID:1164
Uniprot	P33552
GeneID	1164;
Concentration	1mg/ml
Formulation	Supplied in 0.1M Tris-buffered saline with 10% Glycerol (pH7.0). 0.01% Thimerosal was added as a preservative.
Storage	Store at -20°C for long term preservation (recommended). Store at 4°C for short term use.

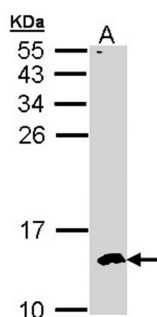
Application Details

Predicted MW: 10kd

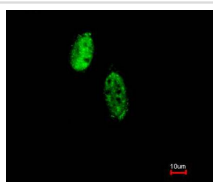
Western blotting: 1:500-1:3000

Immunofluorescence: 1:100-1:200

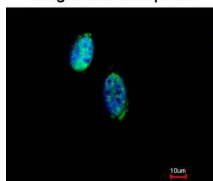
Images



Sample (30 ug of whole cell lysate)
A: Hep G2
15% SDS PAGE
Primary antibody diluted at 1: 500



Merged with DNA probe



Immunofluorescence analysis of paraformaldehyde-fixed HeLa, using CKS-2 antibody at 1: 500 dilution.

Background

CKS2 protein binds to the catalytic subunit of the cyclin dependent kinases and is essential for their biological function. The CKS2 mRNA is found to be expressed in different patterns through the cell cycle in HeLa cells, which reflects specialized role for the encoded protein. [provided by RefSeq]

Note: This product is for in vitro research use only