

GRP antibody

Catalog No: #38863



Package Size: #38863-1 50ul #38863-2 100ul

Orders: order@signalwayantibody.com
Support: tech@signalwayantibody.com

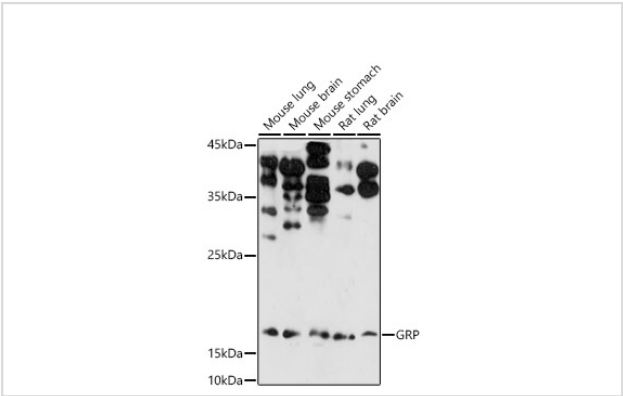
Description

Product Name	GRP antibody
Host Species	Rabbit
Clonality	Polyclonal
Isotype	IgG
Purification	Affinity purification
Applications	WB,IHC,IF
Species Reactivity	Human,Mouse,Rat
Specificity	The antibody detects endogenous level of total GRP protein.
Immunogen Type	Recombinant Protein
Immunogen Description	Recombinant fusion protein of human GRP (NP_002082.2).
Target Name	GRP
Other Names	GRP;BN;GRP-10;preproGRP;proGRP;GRP
Accession No.	Uniprot:P07492GeneID:2922
Uniprot	P07492
GeneID	2922
SDS-PAGE MW	16Kda
Concentration	1.0mg/ml
Formulation	PBS with 0.02% sodium azide,50% glycerol,pH7.3.
Storage	Store at -20°C. Avoid freeze / thaw cycles.

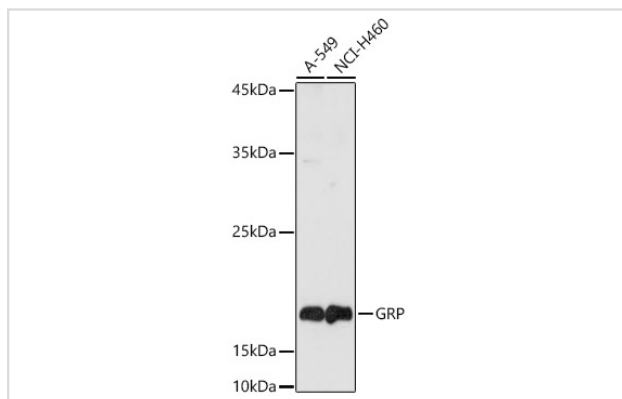
Application Details

WB 1:500 - 1:2000IHC 1:50 - 1:200IF 1:50 - 1:200

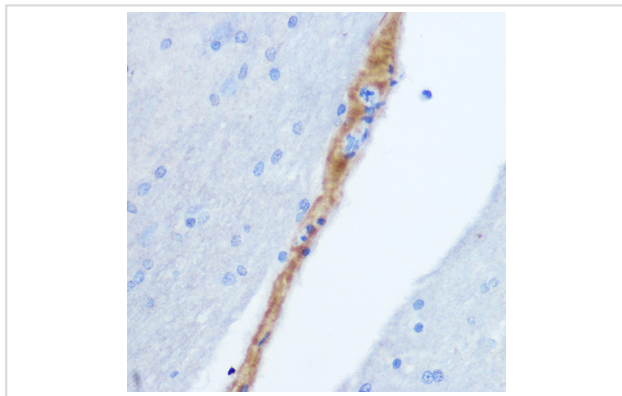
Images



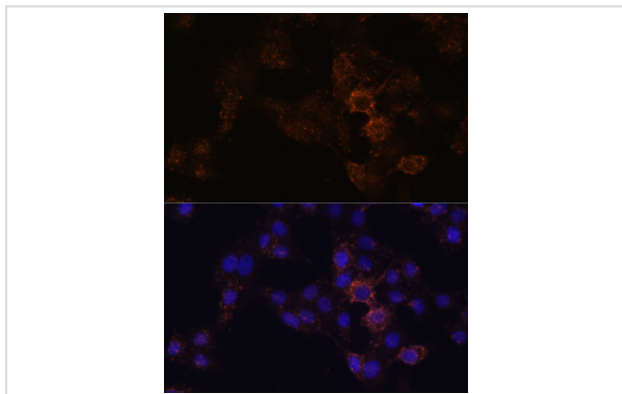
Western blot analysis of extracts of various cell lines, using GRP antibody.



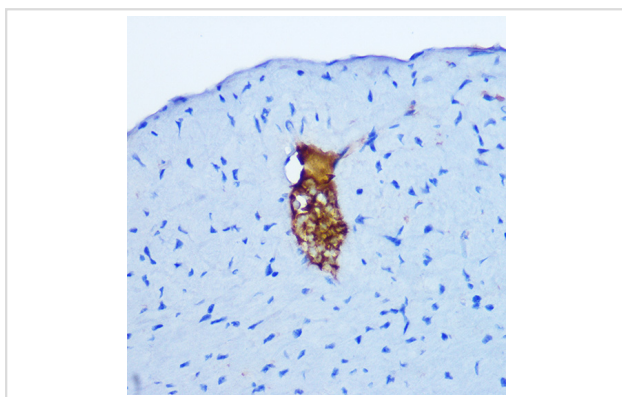
Western blot analysis of extracts of various cell lines, using GRP antibody.



Immunohistochemistry of paraffin-embedded rat brain using GRP Rabbit pAb.



Immunofluorescence analysis of HeLa cells using GRP antibody.



Immunohistochemistry of paraffin-embedded mouse heart using GRP Rabbit pAb.

Background

This gene encodes a member of the bombesin-like family of gastrin-releasing peptides. The encoded preproprotein is proteolytically processed to generate two peptides, gastrin-releasing peptide and neuromedin-C. These peptides regulate numerous functions of the gastrointestinal and central nervous systems, including release of gastrointestinal hormones, smooth muscle cell contraction, and epithelial cell proliferation. These peptides are also likely to play a role in human cancers of the lung, colon, stomach, pancreas, breast, and prostate. Alternative splicing results in multiple transcript variants, at least one of which encodes a preproprotein that is proteolytically processed.

Note: This product is for in vitro research use only