

TSSC1 antibody

Catalog No: #22379

Orders: order@signalwayantibody.comSupport: tech@signalwayantibody.com

Description

Product Name	TSSC1 antibody
Host Species	Rabbit
Clonality	Polyclonal
Purification	Purified by antigen-affinity chromatography.
Applications	WB IF
Species Reactivity	Hu
Immunogen Type	Recombinant protein
Immunogen Description	Recombinant protein fragment contain a sequence corresponding to a region within amino acids 1 and 162 of TSSC1
Target Name	TSSC1
Accession No.	Swiss-Prot:Q53HC9Gene ID:7260
Uniprot	Q53HC9
GeneID	7260;
Concentration	0.8mg/ml
Formulation	Supplied in 0.1M Tris-buffered saline with 20% Glycerol (pH7.0). 0.01% Thimerosal was added as a preservative.
Storage	Store at -20°C for long term preservation (recommended). Store at 4°C for short term use.

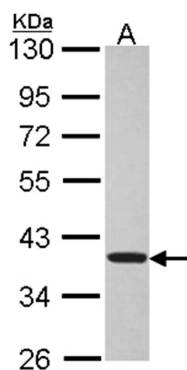
Application Details

Predicted MW: 44kd

Western blotting: 1:500-1:3000

Immunofluorescence: 1:100-1:200

Images

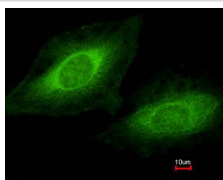


Sample (30 ug of whole cell lysate)

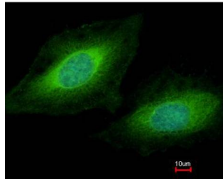
A: HeLa

10% SDS PAGE

Primary antibody diluted at 1: 5000



Costained with Hoechst 33342



Immunofluorescence analysis of methanol-fixed HeLa, using TSSC1 antibody at 1: 200 dilution.

Background

This gene has been reported in PMID 9403053 as one of several tumor-suppressing subtransferable fragments located in the imprinted gene domain of 11p15.5, an important tumor-suppressor gene region. Alterations in this region have been associated with the Beckwith-Wiedemann syndrome, Wilms tumor, rhabdomyosarcoma, adrenocortical carcinoma, and lung, ovarian, and breast cancer. Alignment of this gene to genomic sequence data suggests that this gene resides on chromosome 2 rather than chromosome 11. [provided by RefSeq]

Note: This product is for in vitro research use only