

SF1 antibody

Catalog No: #38902

Package Size: #38902-1 50ul #38902-2 100ul

Orders: order@signalwayantibody.comSupport: tech@signalwayantibody.com

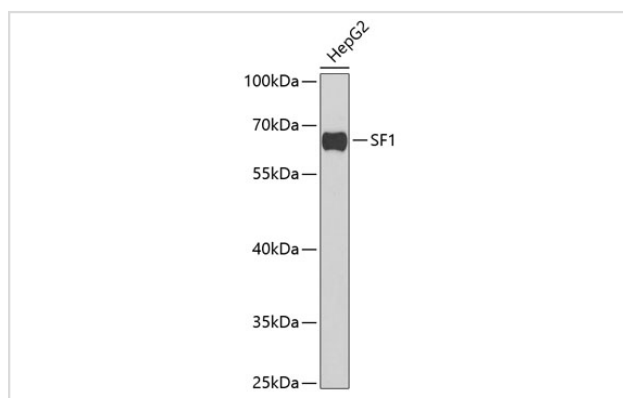
Description

Product Name	SF1 antibody
Host Species	Rabbit
Clonality	Polyclonal
Isotype	IgG
Purification	Affinity purification
Applications	WB
Species Reactivity	Human,Mouse
Specificity	The antibody detects endogenous level of total SF1 protein.
Immunogen Type	Recombinant Protein
Immunogen Description	Recombinant fusion protein of human SF1 (NP_973727.1).
Target Name	SF1
Other Names	SF1;BBP;D11S636;MBBP;ZCCHC25;ZFM1;ZNF162
Accession No.	Uniprot:Q15637GeneID:7536
Uniprot	Q15637
GeneID	7536
SDS-PAGE MW	68kDa
Concentration	1.0mg/ml
Formulation	PBS with 0.02% sodium azide,50% glycerol,pH7.3.
Storage	Store at -20°C. Avoid freeze / thaw cycles.

Application Details

WB 1:500 - 1:2000

Images



Western blot analysis of extracts of HepG2 cells, using SF1 antibody.

Background

This gene encodes a nuclear pre-mRNA splicing factor. The encoded protein specifically recognizes the intron branch point sequence at the 3' splice site, together with the large subunit of U2 auxiliary factor (U2AF), and is required for the early stages of spliceosome assembly. It also plays a role in nuclear pre-mRNA retention and transcriptional repression. The encoded protein contains an N-terminal U2AF ligand motif, a central hnRNP K homology motif and quaking 2 region which bind a key branch-site adenosine within the branch point sequence, a zinc knuckles domain, and a C-terminal proline-rich domain. Alternative splicing results in multiple transcript variants.

Note: This product is for in vitro research use only