

C1D antibody

Catalog No: #38926

Package Size: #38926-1 50ul #38926-2 100ul

Orders: order@signalwayantibody.comSupport: tech@signalwayantibody.com

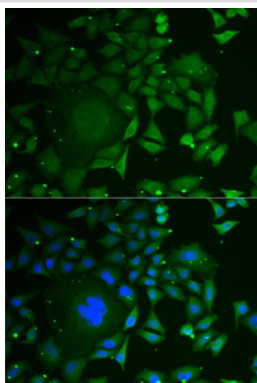
Description

Product Name	C1D antibody
Host Species	Rabbit
Clonality	Polyclonal
Purification	Antibodies were purified by affinity purification using immunogen.
Applications	WB,IF
Species Reactivity	Human
Specificity	The antibody detects endogenous level of total C1D protein.
Immunogen Type	Recombinant Protein
Immunogen Description	Recombinant protein of human C1D.
Target Name	C1D
Other Names	LRP1; hC1D; SUNCOR; SUN-CoR;
Accession No.	Swiss-Prot#: Q13901NCBI Gene ID: 10438
Uniprot	Q13901
GeneID	10438;
SDS-PAGE MW	16kd
Concentration	1.0mg/ml
Formulation	Supplied at 1.0mg/mL in phosphate buffered saline (without Mg ²⁺ and Ca ²⁺), pH 7.4, 150mM NaCl, 0.02% sodium azide and 50% glycerol.
Storage	Store at -20°C

Application Details

WB 1:500 - 1:2000IF 1:50 - 1:100

Images



Immunofluorescence analysis of U2OS cells using C1D . Blue:
DAPI for nuclear staining.

Background

The protein encoded by this gene is a DNA binding and apoptosis-inducing protein and is localized in the nucleus. It is also a Rac3-interacting protein which acts as a corepressor for the thyroid hormone receptor. This protein is thought to regulate TRAX/Translin complex formation. Alternate splicing results in multiple transcript variants that encode the same protein. Multiple pseudogenes of this gene are found on chromosome 10.

Note: This product is for in vitro research use only