

LHR antibody

Catalog No: #22383

Orders: order@signalwayantibody.comSupport: tech@signalwayantibody.com

Description

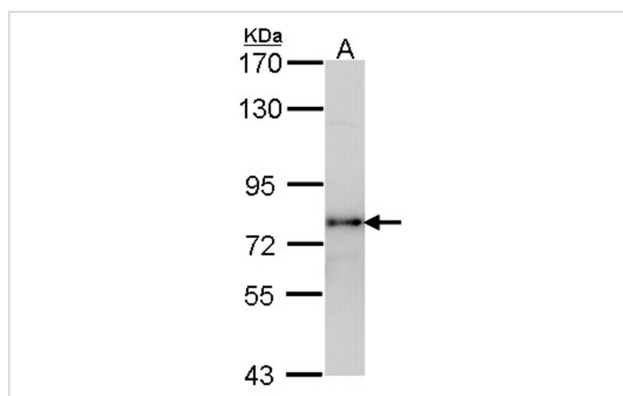
Product Name	LHR antibody
Host Species	Rabbit
Clonality	Polyclonal
Purification	Purified by antigen-affinity chromatography.
Applications	WB
Species Reactivity	Hu
Immunogen Type	Peptide
Immunogen Description	Synthetic peptide contain a sequence corresponding to a region within amino acids 622 and 685 of LHR
Target Name	LHR
Other Names	LCGR; LGR2; LHR; hLHR
Accession No.	Swiss-Prot:P22888Gene ID:3973
Uniprot	P22888
GeneID	3973;
Concentration	1mg/ml
Formulation	Supplied in 1XPBS, 1%BSA, 20% Glycerol (pH7.0). 0.01% Thimerosal was added as a preservative.
Storage	Store at -20°C for long term preservation (recommended). Store at 4°C for short term use.

Application Details

Predicted MW: 79kd

Western blotting: 1:500-1:3000

Images



Sample (30 ug of whole cell lysate)

A: H1299

7.5% SDS PAGE

LHR antibody diluted at 1: 1000

Background

This gene encodes the receptor for both luteinizing hormone and choriogonadotropin. This receptor belongs to the G-protein coupled receptor 1 family, and its activity is mediated by G proteins which activate adenylate cyclase. Mutations in this gene result in disorders of male secondary sexual character development, including familial male precocious puberty, also known as testotoxicosis, hypogonadotropic hypogonadism, Leydig cell adenoma with precocious puberty, and male pseudohermaphroditism with Leydig cell hypoplasia. [provided by RefSeq]

Note: This product is for in vitro research use only