

## RHOD antibody

Catalog No: #38940

Package Size: #38940-1 50ul #38940-2 100ul

Orders: [order@signalwayantibody.com](mailto:order@signalwayantibody.com)Support: [tech@signalwayantibody.com](mailto:tech@signalwayantibody.com)

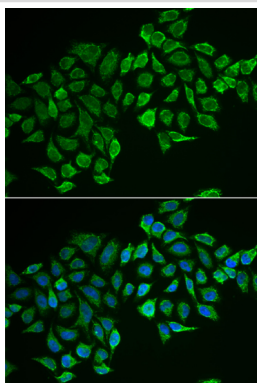
## Description

Product Name	RHOD antibody
Host Species	Rabbit
Clonality	Polyclonal
Purification	Antibodies were purified by affinity purification using immunogen.
Applications	WB,IHC,IF
Species Reactivity	Human,Mouse,Rat
Specificity	The antibody detects endogenous level of total RHOD protein.
Immunogen Type	Recombinant Protein
Immunogen Description	Recombinant protein of human RHOD.
Target Name	RHOD
Other Names	Rho; ARHD; RHOM; RHOHP1;
Accession No.	Swiss-Prot#: O00212NCBI Gene ID: 29984
Uniprot	O00212
GeneID	29984;
SDS-PAGE MW	23kd
Concentration	1.0mg/ml
Formulation	Supplied at 1.0mg/mL in phosphate buffered saline (without Mg <sup>2+</sup> and Ca <sup>2+</sup> ), pH 7.4, 150mM NaCl, 0.02% sodium azide and 50% glycerol.
Storage	Store at -20°C

## Application Details

WB□1:500 - 1:2000IHC□1:50 - 1:200IF□1:50 - 1:200

## Images



Immunofluorescence analysis of MCF-7 cells using RHOD .  
Blue: DAPI for nuclear staining.

## Background

---

Ras homolog, or Rho, proteins interact with protein kinases and may serve as targets for activated GTPase. They play a critical role in muscle differentiation. The protein encoded by this gene binds GTP and is a member of the small GTPase superfamily. It is involved in endosome dynamics and reorganization of the actin cytoskeleton, and it may coordinate membrane transport with the function of the cytoskeleton. Two transcript variants encoding different isoforms have been found for this gene.

---

Note: This product is for in vitro research use only