

MP1 antibody

Catalog No: #22385



Orders: [order@signalwayantibody.com](mailto:order@signalwayantibody.com)  
Support: [tech@signalwayantibody.com](mailto:tech@signalwayantibody.com)

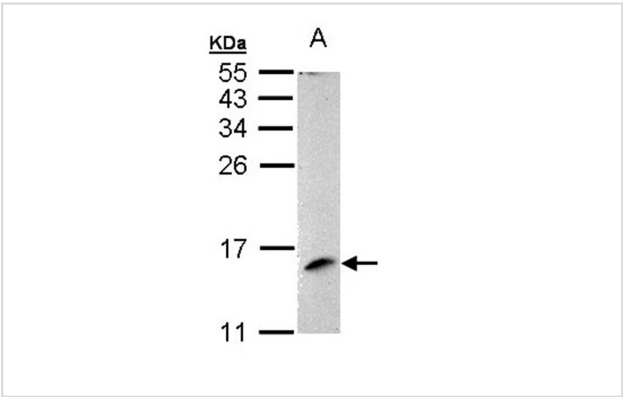
Description

Product Name	MP1 antibody
Host Species	Rabbit
Clonality	Polyclonal
Purification	Purified by antigen-affinity chromatography.
Applications	WB IHC
Species Reactivity	Hu
Immunogen Type	Recombinant protein
Immunogen Description	Recombinant protein fragment contain a sequence corresponding to a region within amino acids 1 and 102 of human MAP2K1IP1
Target Name	MP1
Accession No.	Swiss-Prot:Q9UHA4Gene ID:8649
Uniprot	Q9UHA4
GeneID	8649;
Concentration	0.9mg/ml
Formulation	Supplied in 0.1M Tris-buffered saline with 10% Glycerol (pH7.0). 0.01% Thimerosal was added as a preservative.
Storage	Store at -20°C for long term preservation (recommended). Store at 4°C for short term use.

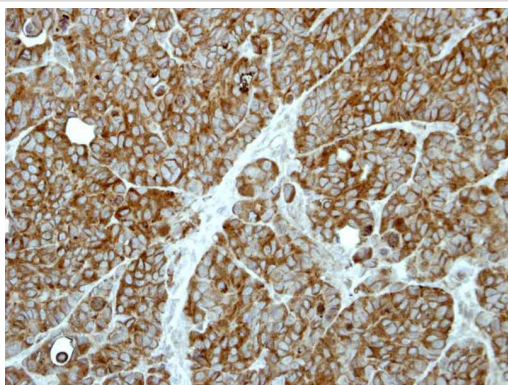
Application Details

Predicted MW: 14kd
Western blotting: 1:500-1:3000
Immunohistochemistry: 1:50-1:500

Images



Sample (30 ug of whole cell lysate)  
A: 293T  
15% SDS PAGE  
Primary antibody diluted at 1: 1000



Immunohistochemical analysis of paraffin-embedded SW480 xenograft, using MP1 antibody at 1: 500 dilution.

## Background

This gene encodes a scaffold protein that functions in the extracellular signal-regulated kinase (ERK) cascade. The protein is localized to late endosomes by the mitogen-activated protein-binding protein-interacting protein, and binds specifically to MAP kinase kinase MAP2K1/MEK1, MAP kinase MAPK3/ERK1, and MAP kinase MAPK1/ERK2. Studies of the orthologous gene in mouse indicate that it regulates late endosomal traffic and cell proliferation. Multiple transcript variants are expressed by this gene, but only one variant is thought to express a protein. [provided by RefSeq]

Note: This product is for in vitro research use only