

EPM2AIP1 antibody

Catalog No: #22387

Orders: order@signalwayantibody.comSupport: tech@signalwayantibody.com

Description

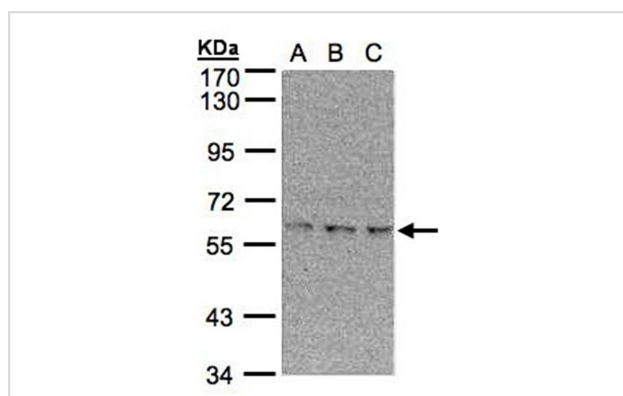
Product Name	EPM2AIP1 antibody
Host Species	Rabbit
Clonality	Polyclonal
Purification	Purified by antigen-affinity chromatography.
Applications	WB
Species Reactivity	Hu
Immunogen Type	Peptide
Immunogen Description	Synthetic peptide contain a sequence corresponding to a region within amino acids 1 and 13 of Human EPM2AIP1
Target Name	EPM2AIP1
Accession No.	Swiss-Prot:Q7L775Gene ID:9852
Uniprot	Q7L775
GeneID	9852;
Concentration	1mg/ml
Formulation	Supplied in 0.1M Tris-buffered saline with 10% Glycerol (pH7.0). 0.01% Thimerosal was added as a preservative.
Storage	Store at -20°C for long term preservation (recommended). Store at 4°C for short term use.

Application Details

Predicted MW: 70kd

Western blotting: 1:500-1:3000

Images



Sample(30 ug of whole cell lysate)

A: 293T

B: A431

C: H1299

7.5% SDS PAGE

Primary antibody diluted at 1: 500

Background

The EPM2A gene, which encodes laforin, is mutated in an autosomal recessive form of adolescent progressive myoclonus epilepsy. The protein encoded by this gene binds to laforin, but its function is not known. This gene is intronless. [provided by RefSeq]

Note: This product is for in vitro research use only