

## CCT3 antibody

Catalog No: #38999

Package Size: #38999-1 50ul #38999-2 100ul

Orders: [order@signalwayantibody.com](mailto:order@signalwayantibody.com)Support: [tech@signalwayantibody.com](mailto:tech@signalwayantibody.com)

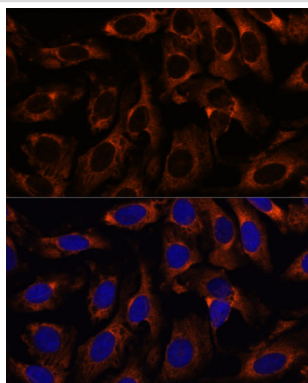
## Description

Product Name	CCT3 antibody
Host Species	Rabbit
Clonality	Polyclonal
Isotype	IgG
Purification	Affinity purification
Applications	WB,IF
Species Reactivity	Human,Mouse,Rat
Specificity	The antibody detects endogenous level of total CCT3 protein.
Immunogen Type	Recombinant Protein
Immunogen Description	Recombinant fusion protein of human CCT3 (NP_005989.3).
Target Name	CCT3
Other Names	CCT3;CCT-gamma;CCTG;PIG48;TCP-1-gamma;TRIC5
Accession No.	Uniprot:P49368GeneID:7203
Uniprot	P49368
GeneID	7203
SDS-PAGE MW	60kDa
Concentration	1.0mg/ml
Formulation	PBS with 0.02% sodium azide,50% glycerol,pH7.3.
Storage	Store at -20°C. Avoid freeze / thaw cycles.

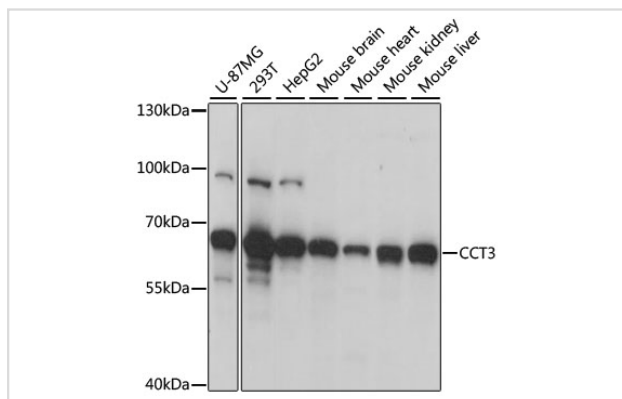
## Application Details

WB□1:500 - 1:2000IF□1:50 - 1:200

## Images



Immunofluorescence analysis of U-2 OS cells using CCT3 antibody.



Western blot analysis of extracts of various cell lines, using CCT3 antibody.

## Background

The protein encoded by this gene is a molecular chaperone that is a member of the chaperonin containing TCP1 complex (CCT), also known as the TCP1 ring complex (TRiC). This complex consists of two identical stacked rings, each containing eight different proteins. Unfolded polypeptides enter the central cavity of the complex and are folded in an ATP-dependent manner. The complex folds various proteins, including actin and tubulin. Alternate transcriptional splice variants have been characterized for this gene. In addition, a pseudogene of this gene has been found on chromosome 8.

Note: This product is for in vitro research use only