

CCT5 antibody

Catalog No: #39001



Package Size: #39001-1 50ul #39001-2 100ul

Orders: [order@signalwayantibody.com](mailto:order@signalwayantibody.com)  
Support: [tech@signalwayantibody.com](mailto:tech@signalwayantibody.com)

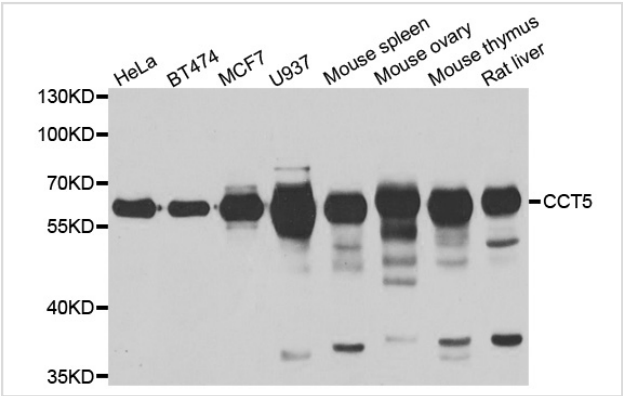
Description

Product Name	CCT5 antibody
Host Species	Rabbit
Clonality	Polyclonal
Purification	Antibodies were purified by affinity purification using immunogen.
Applications	WB
Species Reactivity	Hu Ms Rt
Specificity	The antibody detects endogenous level of total CCT5 protein.
Immunogen Type	Recombinant Protein
Immunogen Description	Recombinant protein of human CCT5.
Target Name	CCT5
Other Names	CCTE; HEL-S-69; CCT-epsilon; TCP-1-epsilon;
Accession No.	Swiss-Prot#: P48643NCBI Gene ID: 22948
Uniprot	P48643
GeneID	22948;
SDS-PAGE MW	59kd
Concentration	1.0mg/ml
Formulation	Supplied at 1.0mg/mL in phosphate buffered saline (without Mg2+ and Ca2+), pH 7.4, 150mM NaCl, 0.02% sodium azide and 50% glycerol.
Storage	Store at -20°C

Application Details

Western blotting: □1:500 - 1:2000

Images



Western blot analysis of extracts of various cell lines, using CCT5 antibody.

## Background

---

The protein encoded by this gene is a molecular chaperone that is a member of the chaperonin containing TCP1 complex (CCT), also known as the TCP1 ring complex (TRiC). This complex consists of two identical stacked rings, each containing eight different proteins. Unfolded polypeptides enter the central cavity of the complex and are folded in an ATP-dependent manner. The complex folds various proteins, including actin and tubulin. Alternate transcriptional splice variants of this gene have been observed but have not been thoroughly characterized. In addition, three pseudogenes of this gene have been identified.

---

Note: This product is for in vitro research use only