

CD207 antibody

Catalog No: #39003



Package Size: #39003-1 50ul #39003-2 100ul

Orders: order@signalwayantibody.com
Support: tech@signalwayantibody.com

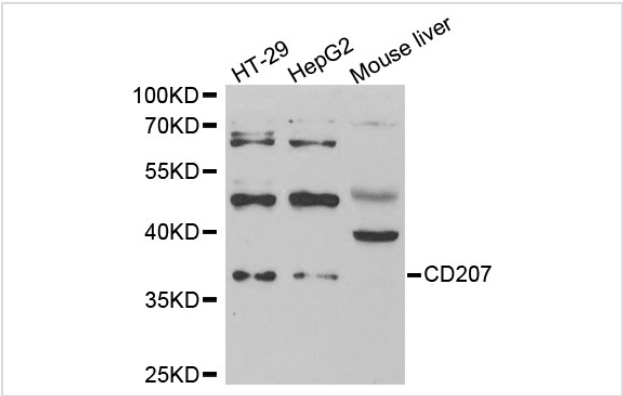
Description

Product Name	CD207 antibody
Host Species	Rabbit
Clonality	Polyclonal
Purification	Antibodies were purified by affinity purification using immunogen.
Applications	WB
Species Reactivity	Hu
Specificity	The antibody detects endogenous level of total CD207 protein.
Immunogen Type	Recombinant Protein
Immunogen Description	Recombinant protein of human CD207.
Target Name	CD207
Other Names	CLEC4K;
Accession No.	Swiss-Prot#: Q9UJ71NCBI Gene ID: 50489
Uniprot	Q9UJ71
GeneID	50489;
SDS-PAGE MW	36kd
Concentration	1.0mg/ml
Formulation	Supplied at 1.0mg/mL in phosphate buffered saline (without Mg2+ and Ca2+), pH 7.4, 150mM NaCl, 0.02% sodium azide and 50% glycerol.
Storage	Store at -20°C

Application Details

Western blotting: □1:500 - 1:2000

Images



Western blot analysis of extracts of various cell lines, using CD207 antibody.

Background

The protein encoded by this gene is expressed only in Langerhans cells which are immature dendritic cells of the epidermis and mucosa. It is localized in the Birbeck granules, organelles present in the cytoplasm of Langerhans cells and consisting of superimposed and zippered membranes. It is a C-type lectin with mannose binding specificity, and it has been proposed that mannose binding by this protein leads to internalization of antigen into Birbeck granules and providing access to a nonclassical antigen-processing pathway. Mutations in this gene result in Birbeck granules deficiency or loss of sugar binding activity.

Note: This product is for in vitro research use only