

CENPC antibody

Catalog No: #39005



Package Size: #39005-1 50ul #39005-2 100ul

Orders: order@signalwayantibody.com
Support: tech@signalwayantibody.com

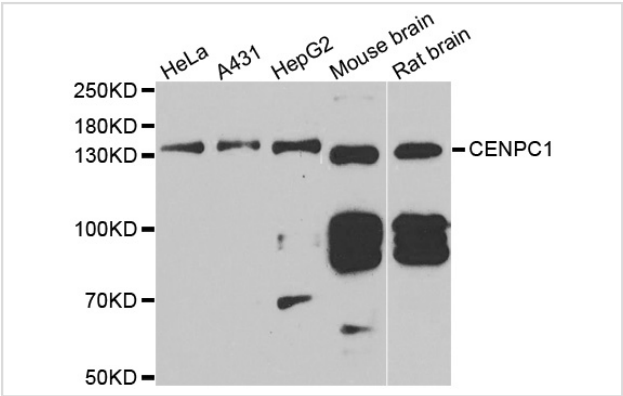
Description

Product Name	CENPC antibody
Host Species	Rabbit
Clonality	Polyclonal
Purification	Antibodies were purified by affinity purification using immunogen.
Applications	WB
Species Reactivity	Hu
Specificity	The antibody detects endogenous level of total CENPC protein.
Immunogen Type	Recombinant Protein
Immunogen Description	Recombinant protein of human CENPC.
Target Name	CENPC
Other Names	MIF2; hcp-4; CENP-C; CENPC1;
Accession No.	Swiss-Prot#: Q03188NCBI Gene ID: 1060
Uniprot	Q03188
GeneID	1060;
SDS-PAGE MW	106kd
Concentration	1.0mg/ml
Formulation	Supplied at 1.0mg/mL in phosphate buffered saline (without Mg2+ and Ca2+), pH 7.4, 150mM NaCl, 0.02% sodium azide and 50% glycerol.
Storage	Store at -20°C

Application Details

Western blotting: □1:500 - 1:2000

Images



Western blot analysis of extracts of various cell lines, using CENPC antibody.

Background

Centromere protein C 1 is a centromere autoantigen and a component of the inner kinetochore plate. The protein is required for maintaining proper kinetochore size and a timely transition to anaphase. A putative pseudogene exists on chromosome 12.

Note: This product is for in vitro research use only