

SCAP2 antibody

Catalog No: #22390

Orders: order@signalwayantibody.comSupport: tech@signalwayantibody.com

Description

Product Name	SCAP2 antibody
Host Species	Rabbit
Clonality	Polyclonal
Purification	Purified by antigen-affinity chromatography.
Applications	WB IHC
Species Reactivity	Hu
Immunogen Type	Peptide
Immunogen Description	Synthetic peptide contain a sequence corresponding to a region within amino acids 296 and 359 of SCAP2
Target Name	SCAP2
Accession No.	Swiss-Prot:O75563Gene ID:8935
Uniprot	O75563
GeneID	8935;
Concentration	1mg/ml
Formulation	Supplied in 1XPBS, 10% Glycerol (pH7.0). 0.01% Thimerosal was added as a preservative.
Storage	Store at -20°C for long term preservation (recommended). Store at 4°C for short term use.

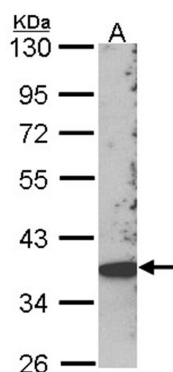
Application Details

Predicted MW: 41kd

Western blotting: 1:500-1:3000

Immunohistochemistry: 1:100-1:250

Images

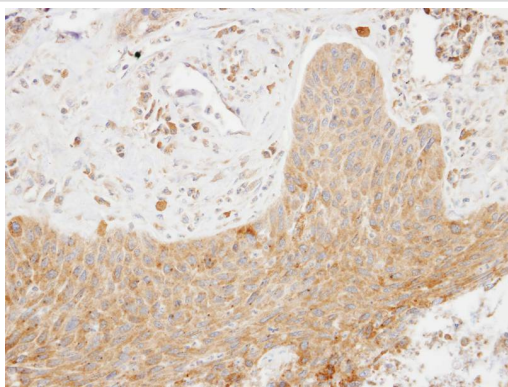


Sample (30 ug of whole cell lysate)

A: Hep G2

10% SDS PAGE

SCAP2 antibody diluted at 1: 1000



Immunohistochemical analysis of paraffin-embedded lung ca, using SCAP2 antibody at 1: 100 dilution.

Background

The protein encoded by this gene belongs to the src family kinases. This protein is similar to the src kinase associated phosphoprotein 1. It is an adaptor protein that is thought to play an essential role in the src signaling pathway in various cells. It inhibits PTK2B/RAFTK activity and regulates alpha-synuclein phosphorylation. [provided by RefSeq]

Note: This product is for in vitro research use only