

## ENTPD2 antibody

Catalog No: #39024

Package Size: #39024-1 50ul #39024-2 100ul

Orders: [order@signalwayantibody.com](mailto:order@signalwayantibody.com)Support: [tech@signalwayantibody.com](mailto:tech@signalwayantibody.com)

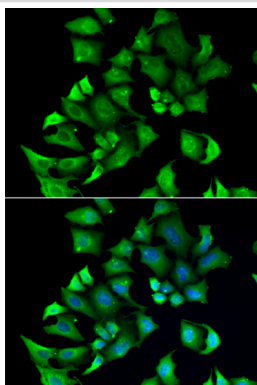
## Description

|                       |  |
|-----------------------|--|
| Product Name          | ENTPD2 antibody  |
| Host Species          | Rabbit   |
| Clonality             | Polyclonal   |
| Purification          | Antibodies were purified by affinity purification using immunogen.   |
| Applications          | WB,IF  |
| Species Reactivity    | Human  |
| Specificity           | The antibody detects endogenous level of total ENTPD2 protein.   |
| Immunogen Type        | Recombinant Protein  |
| Immunogen Description | Recombinant protein of human ENTPD2.   |
| Target Name           | ENTPD2   |
| Other Names           | CD39L1; NTPDase-2;   |
| Accession No.         | Swiss-Prot#: Q9Y5L3NCBI Gene ID: 954   |
| Uniprot               | Q9Y5L3   |
| GeneID                | 954;   |
| SDS-PAGE MW           | 53kd   |
| Concentration         | 1.0mg/ml   |
| Formulation           | Supplied at 1.0mg/mL in phosphate buffered saline (without Mg <sup>2+</sup> and Ca <sup>2+</sup> ), pH 7.4, 150mM NaCl, 0.02% sodium azide and 50% glycerol. |
| Storage               | Store at -20°C   |

## Application Details

WB□1:500 - 1:2000IF□1:50 - 1:100

## Images



Immunofluorescence analysis of A549 cells using ENTPD2 .  
Blue: DAPI for nuclear staining.

## Background

---

The protein encoded by this gene is the type 2 enzyme of the ecto-nucleoside triphosphate diphosphohydrolase family (E-NTPDase). E-NTPDases are a family of ecto-nucleosidases that hydrolyze 5'-triphosphates. This ecto-ATPase is an integral membrane protein. Alternative splicing of this gene results in multiple transcript variants.

---

Note: This product is for in vitro research use only