

ETFDH antibody

Catalog No: #39025



Package Size: #39025-1 50ul #39025-2 100ul

Orders: [order@signalwayantibody.com](mailto:order@signalwayantibody.com)  
Support: [tech@signalwayantibody.com](mailto:tech@signalwayantibody.com)

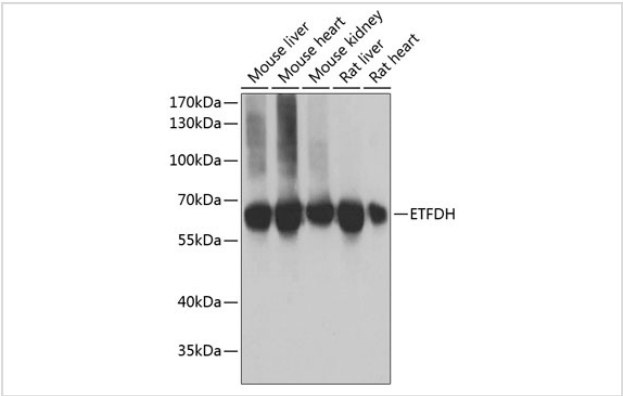
Description

Product Name	ETFDH antibody
Host Species	Rabbit
Clonality	Polyclonal
Purification	Antibodies were purified by affinity purification using immunogen.
Applications	WB
Species Reactivity	Human,Mouse,Rat
Specificity	The antibody detects endogenous level of total ETFDH protein.
Immunogen Type	Recombinant Protein
Immunogen Description	Recombinant protein of human ETFDH.
Target Name	ETFDH
Other Names	MADD; ETFQO;
Accession No.	Swiss-Prot#: Q16134NCBI Gene ID: 2110
Uniprot	Q16134
GeneID	2110;
SDS-PAGE MW	68kd
Concentration	1.0mg/ml
Formulation	Supplied at 1.0mg/mL in phosphate buffered saline (without Mg2+ and Ca2+), pH 7.4, 150mM NaCl, 0.02% sodium azide and 50% glycerol.
Storage	Store at -20°C

Application Details

WB 1:500 - 1:2000

Images



Western blot analysis of extracts of various cell lines, using ETFDH at 1:1000 dilution.

## Background

---

This gene encodes a component of the electron-transfer system in mitochondria and is essential for electron transfer from a number of mitochondrial flavin-containing dehydrogenases to the main respiratory chain. Mutations in this gene are associated with glutaric acidemia. Alternatively spliced transcript variants that encode distinct isoforms have been observed.

---

Note: This product is for in vitro research use only