

MF12 antibody

Catalog No: #39073



Package Size: #39073-1 50ul #39073-2 100ul

Orders: order@signalwayantibody.com
Support: tech@signalwayantibody.com

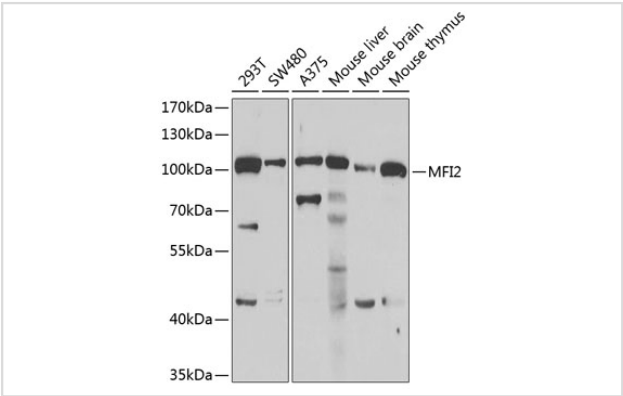
Description

Product Name	MF12 antibody
Host Species	Rabbit
Clonality	Polyclonal
Isotype	IgG
Purification	Affinity purification
Applications	WB,IF
Species Reactivity	Human,Mouse,Rat
Specificity	The antibody detects endogenous level of total MF12 protein.
Immunogen Type	Recombinant Protein
Immunogen Description	Recombinant fusion protein of human MF12 (NP_201573.1).
Target Name	MF12
Other Names	MELTF;CD228;MAP97;MF12;MTF1;MTf
Accession No.	Uniprot:P08582GeneID:4241
Uniprot	P08582
GeneID	4241
SDS-PAGE MW	110kDa
Concentration	1.0mg/ml
Formulation	PBS with 0.02% sodium azide,50% glycerol,pH7.3.
Storage	Store at -20°C. Avoid freeze / thaw cycles.

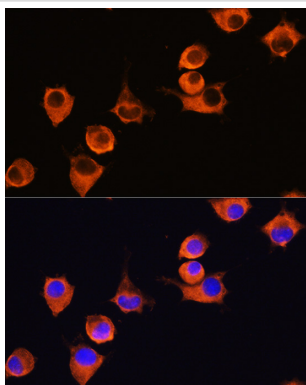
Application Details

WB 1:500 - 1:2000IF 1:50 - 1:200

Images



Western blot analysis of extracts of various cell lines, using MF12 antibody.



Immunofluorescence analysis of L929 cells using MF12 Rabbit pAb.

Background

The protein encoded by this gene is a cell-surface glycoprotein found on melanoma cells. The protein shares sequence similarity and iron-binding properties with members of the transferrin superfamily. The importance of the iron binding function has not yet been identified. This gene resides in the same region of chromosome 3 as members of the transferrin superfamily. Alternative splicing results in two transcript variants.

Note: This product is for in vitro research use only