

## MYL3 antibody

Catalog No: #39082

Package Size: #39082-1 50ul #39082-2 100ul

Orders: [order@signalwayantibody.com](mailto:order@signalwayantibody.com)Support: [tech@signalwayantibody.com](mailto:tech@signalwayantibody.com)

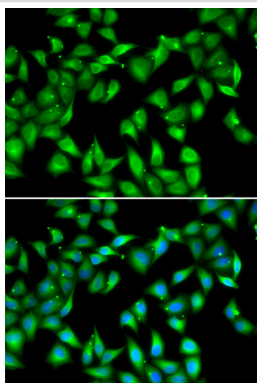
## Description

Product Name	MYL3 antibody
Host Species	Rabbit
Clonality	Polyclonal
Purification	Antibodies were purified by affinity purification using immunogen.
Applications	WB,IF
Species Reactivity	Human,Mouse,Rat
Specificity	The antibody detects endogenous level of total MYL3 protein.
Immunogen Type	Recombinant Protein
Immunogen Description	Recombinant protein of human MYL3.
Target Name	MYL3
Other Names	CMH8; VLC1; MLC1V; MLC1SB;
Accession No.	Swiss-Prot#: P08590NCBI Gene ID: 4634
Uniprot	P08590
GeneID	4634;
SDS-PAGE MW	21kd
Concentration	1.0mg/ml
Formulation	Supplied at 1.0mg/mL in phosphate buffered saline (without Mg <sup>2+</sup> and Ca <sup>2+</sup> ), pH 7.4, 150mM NaCl, 0.02% sodium azide and 50% glycerol.
Storage	Store at -20°C

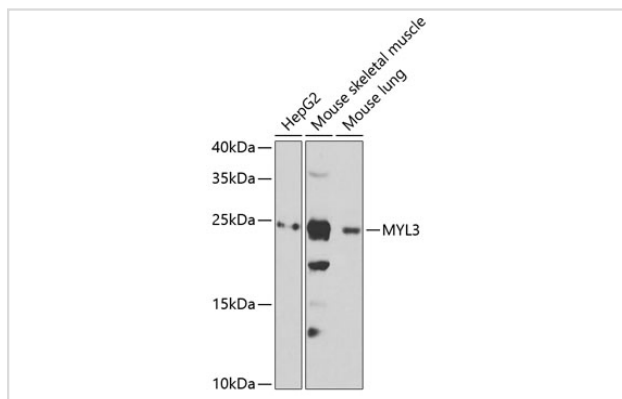
## Application Details

WB□1:500 - 1:2000IF□1:50 - 1:200

## Images



Immunofluorescence analysis of U2OS cells using MYL3 .  
Blue: DAPI for nuclear staining.



Western blot analysis of extracts of various cell lines, using MYL3 at 1:1000 dilution.

## Background

MYL3 encodes myosin light chain 3, an alkali light chain also referred to in the literature as both the ventricular isoform and the slow skeletal muscle isoform. Mutations in MYL3 have been identified as a cause of mid-left ventricular chamber type hypertrophic cardiomyopathy.

Note: This product is for in vitro research use only