

## QPCT antibody

Catalog No: #39122

Package Size: #39122-1 50ul #39122-2 100ul

Orders: [order@signalwayantibody.com](mailto:order@signalwayantibody.com)Support: [tech@signalwayantibody.com](mailto:tech@signalwayantibody.com)

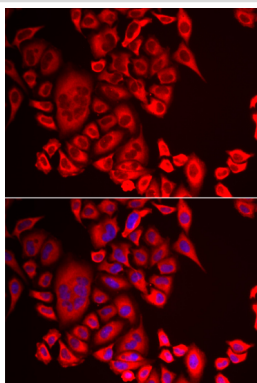
## Description

|                       |  |
|-----------------------|--|
| Product Name          | QPCT antibody  |
| Host Species          | Rabbit   |
| Clonality             | Polyclonal   |
| Purification          | Antibodies were purified by affinity purification using immunogen.   |
| Applications          | WB,IF  |
| Species Reactivity    | Human,Mouse,Rat  |
| Specificity           | The antibody detects endogenous level of total QPCT protein.   |
| Immunogen Type        | Recombinant Protein  |
| Immunogen Description | Recombinant protein of human QPCT.   |
| Target Name           | QPCT   |
| Other Names           | QC; GCT; sQC;  |
| Accession No.         | Swiss-Prot#: Q16769NCBI Gene ID: 25797   |
| Uniprot               | Q16769   |
| GeneID                | 25797;   |
| SDS-PAGE MW           | 40kd   |
| Concentration         | 1.0mg/ml   |
| Formulation           | Supplied at 1.0mg/mL in phosphate buffered saline (without Mg <sup>2+</sup> and Ca <sup>2+</sup> ), pH 7.4, 150mM NaCl, 0.02% sodium azide and 50% glycerol. |
| Storage               | Store at -20°C   |

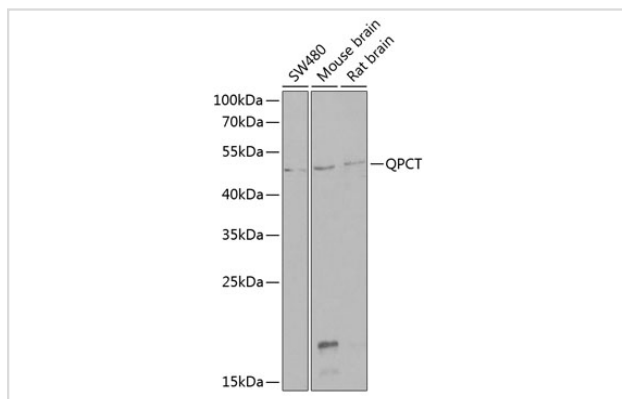
## Application Details

WB□1:500 - 1:2000IF□1:50 - 1:100

## Images



Immunofluorescence analysis of MCF-7 cells using QPCT .  
Blue: DAPI for nuclear staining.



Western blot analysis of extracts of various cell lines, using QPCT at 1:1000 dilution.

## Background

This gene encodes human pituitary glutaminyl cyclase, which is responsible for the presence of pyroglutamyl residues in many neuroendocrine peptides. The amino acid sequence of this enzyme is 86% identical to that of bovine glutaminyl cyclase.

Note: This product is for in vitro research use only