

RPS7 antibody

Catalog No: #39137

Package Size: #39137-1 50ul #39137-2 100ul

Orders: order@signalwayantibody.comSupport: tech@signalwayantibody.com

Description

Product Name	RPS7 antibody
Host Species	Rabbit
Clonality	Polyclonal
Purification	Antibodies were purified by affinity purification using immunogen.
Applications	WB,IHC,IF
Species Reactivity	Human,Mouse,Rat
Specificity	The antibody detects endogenous level of total RPS7 protein.
Immunogen Type	Recombinant Protein
Immunogen Description	Recombinant protein of human RPS7.
Target Name	RPS7
Other Names	S7; DBA8;
Accession No.	Swiss-Prot#: P62081NCBI Gene ID: 6201
Uniprot	P62081
GeneID	6201;
SDS-PAGE MW	22kd
Concentration	0.77mg/ml
Formulation	PBS with 0.02% sodium azide, 50% glycerol, pH7.3.
Storage	Store at -20°C

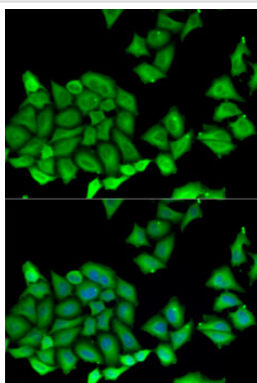
Application Details

WB□1:500 - 1:2000

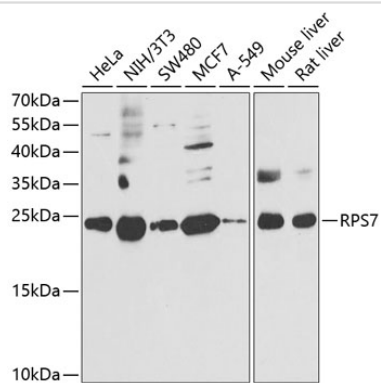
IHC□1:50 - 1:200

IF□1:10 - 1:100

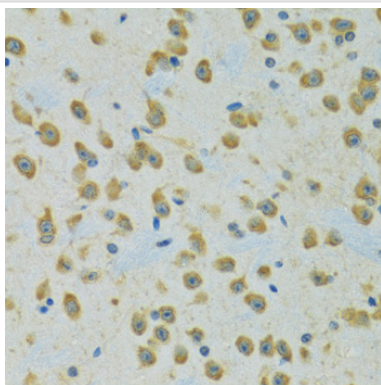
Images



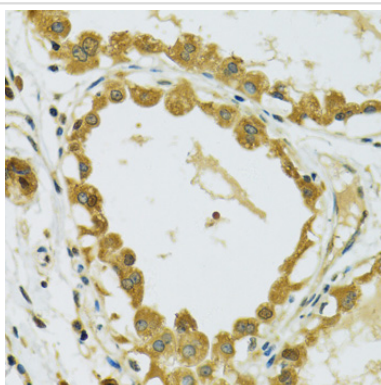
Immunofluorescence analysis of U2OS cells using RPS7 .
Blue: DAPI for nuclear staining.



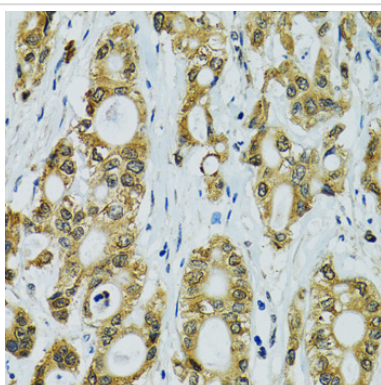
Western blot analysis of extracts of various cell lines, using RPS7 at 1:1000 dilution.



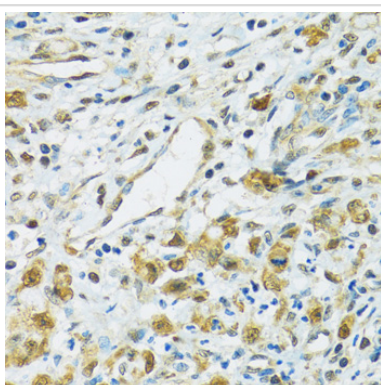
Immunohistochemistry of paraffin-embedded rat brain using RPS7 at dilution of 1:100 (40x lens).



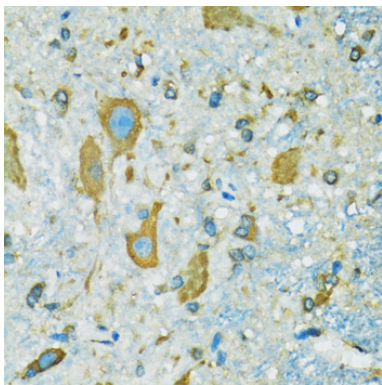
Immunohistochemistry of paraffin-embedded human breast using RPS7 at dilution of 1:100 (40x lens).



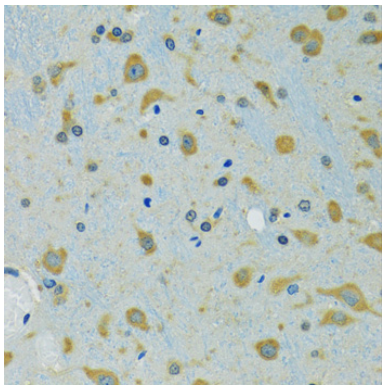
Immunohistochemistry of paraffin-embedded human rectal cancer using RPS7 at dilution of 1:100 (40x lens).



Immunohistochemistry of paraffin-embedded human uterine cancer using RPS7 at dilution of 1:100 (40x lens).



Immunohistochemistry of paraffin-embedded mouse spinal cord using RPS7 at dilution of 1:100 (40x lens).



Immunohistochemistry of paraffin-embedded mouse brain using RPS7 at dilution of 1:100 (40x lens).

Background

Ribosomes, the organelles that catalyze protein synthesis, consist of a small 40S subunit and a large 60S subunit. Together these subunits are composed of 4 RNA species and approximately 80 structurally distinct proteins. This gene encodes a ribosomal protein that is a component of the 40S subunit. The protein belongs to the S7E family of ribosomal proteins. It is located in the cytoplasm. As is typical for genes encoding ribosomal proteins, there are multiple processed pseudogenes of this gene dispersed through the genome.

Note: This product is for in vitro research use only