

SPTLC1 antibody

Catalog No: #39151



Package Size: #39151-1 50ul #39151-2 100ul

Orders: order@signalwayantibody.com
Support: tech@signalwayantibody.com

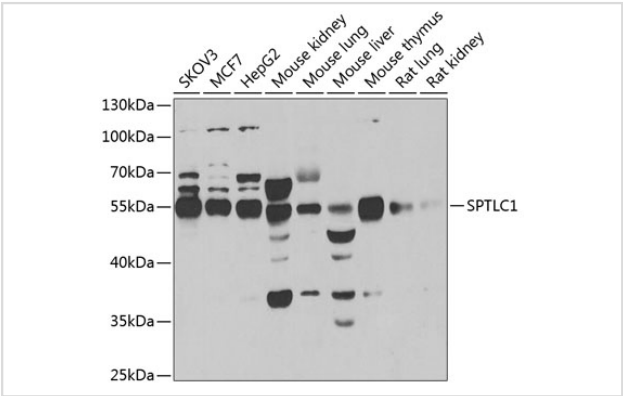
Description

Product Name	SPTLC1 antibody
Host Species	Rabbit
Clonality	Polyclonal
Isotype	IgG
Purification	Affinity purification
Applications	WB
Species Reactivity	Human,Mouse,Rat
Specificity	The antibody detects endogenous level of total SPTLC1 protein.
Immunogen Type	Recombinant Protein
Immunogen Description	Recombinant fusion protein of human SPTLC1 (NP_006406.1).
Target Name	SPTLC1
Other Names	SPTLC1;HSAN1;HSN1;LBC1;LCB1;SPT1;SPTI
Accession No.	Uniprot:O15269GeneID:10558
Uniprot	O15269
GeneID	10558
SDS-PAGE MW	53kDa
Concentration	1.0mg/ml
Formulation	PBS with 0.02% sodium azide,50% glycerol,pH7.3.
Storage	Store at -20°C. Avoid freeze / thaw cycles.

Application Details

WB 1:500 - 1:2000

Images



Western blot analysis of extracts of various cell lines, using SPTLC1 antibody.

Background

This gene encodes a member of the class-II pyridoxal-phosphate-dependent aminotransferase family. The encoded protein is the long chain base subunit 1 of serine palmitoyltransferase. Serine palmitoyltransferase converts L-serine and palmitoyl-CoA to 3-oxosphinganine with pyridoxal 5'-phosphate and is the key enzyme in sphingolipid biosynthesis. Mutations in this gene were identified in patients with hereditary sensory neuropathy type 1. Alternatively spliced variants encoding different isoforms have been identified. Pseudogenes of this gene have been defined on chromosomes 1, 6, 10, and 13.

Note: This product is for in vitro research use only