

TAF1C antibody

Catalog No: #39157



Package Size: #39157-1 50ul #39157-2 100ul

Orders: [order@signalwayantibody.com](mailto:order@signalwayantibody.com)  
Support: [tech@signalwayantibody.com](mailto:tech@signalwayantibody.com)

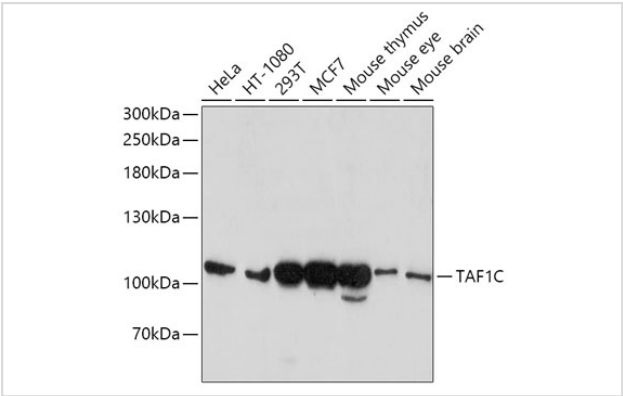
Description

Product Name	TAF1C antibody
Host Species	Rabbit
Clonality	Polyclonal
Isotype	IgG
Purification	Affinity purification
Applications	WB
Species Reactivity	Human,Mouse,Rat
Specificity	The antibody detects endogenous level of total TAF1C protein.
Immunogen Type	Recombinant Protein
Immunogen Description	Recombinant fusion protein of human TAF1C (NP_001230085.1).
Target Name	TAF1C
Other Names	TAF1C;MGC:39976;SL1;TAFI110;TAFI95
Accession No.	Uniprot:Q15572GeneID:9013
Uniprot	Q15572
GeneID	9013
SDS-PAGE MW	110kDa
Concentration	1.0mg/ml
Formulation	PBS with 0.02% sodium azide,50% glycerol,pH7.3.
Storage	Store at -20°C. Avoid freeze / thaw cycles.

Application Details

WB 1:500 - 1:2000

Images



Western blot analysis of extracts of various cell lines, using TAF1C antibody.

## Background

---

Initiation of transcription by RNA polymerase I requires the formation of a complex composed of the TATA-binding protein (TBP) and three TBP-associated factors (TAFs) specific for RNA polymerase I. This complex, known as SL1, binds to the core promoter of ribosomal RNA genes to position the polymerase properly and acts as a channel for regulatory signals. This gene encodes the largest SL1-specific TAF. Multiple alternatively spliced transcript variants encoding different isoforms have been identified.

---

Note: This product is for in vitro research use only