

TALDO1 antibody

Catalog No: #39160

Package Size: #39160-1 50ul #39160-2 100ul

Orders: order@signalwayantibody.comSupport: tech@signalwayantibody.com

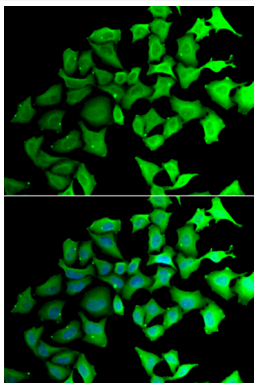
Description

Product Name	TALDO1 antibody
Host Species	Rabbit
Clonality	Polyclonal
Purification	Antibodies were purified by affinity purification using immunogen.
Applications	WB,IF
Species Reactivity	Human,Mouse
Specificity	The antibody detects endogenous level of total TALDO1 protein.
Immunogen Type	Recombinant Protein
Immunogen Description	Recombinant protein of human TALDO1.
Target Name	TALDO1
Other Names	TAL; TALH; TAL-H; TALDOR;
Accession No.	Swiss-Prot#: P37837NCBI Gene ID: 6888
Uniprot	P37837
GeneID	6888;
SDS-PAGE MW	37kd
Concentration	1.0mg/ml
Formulation	Supplied at 1.0mg/mL in phosphate buffered saline (without Mg ²⁺ and Ca ²⁺), pH 7.4, 150mM NaCl, 0.02% sodium azide and 50% glycerol.
Storage	Store at -20°C

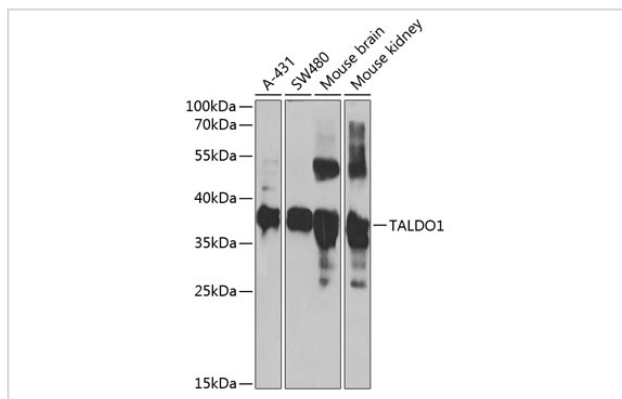
Application Details

WB□1:500 - 1:2000IF□1:10 - 1:100

Images



Immunofluorescence analysis of HeLa cells using TALDO1 .
Blue: DAPI for nuclear staining.



Western blot analysis of extracts of various cell lines, using TALDO1 at 1:1000 dilution.

Background

Transaldolase 1 is a key enzyme of the nonoxidative pentose phosphate pathway providing ribose-5-phosphate for nucleic acid synthesis and NADPH for lipid biosynthesis. This pathway can also maintain glutathione at a reduced state and thus protect sulfhydryl groups and cellular integrity from oxygen radicals. The functional gene of transaldolase 1 is located on chromosome 11 and a pseudogene is identified on chromosome 1 but there are conflicting map locations. The second and third exon of this gene were developed by insertion of a retrotransposable element. This gene is thought to be involved in multiple sclerosis.

Note: This product is for in vitro research use only