

## TEAD1 antibody

Catalog No: #39165

Package Size: #39165-1 50ul #39165-2 100ul

Orders: [order@signalwayantibody.com](mailto:order@signalwayantibody.com)Support: [tech@signalwayantibody.com](mailto:tech@signalwayantibody.com)

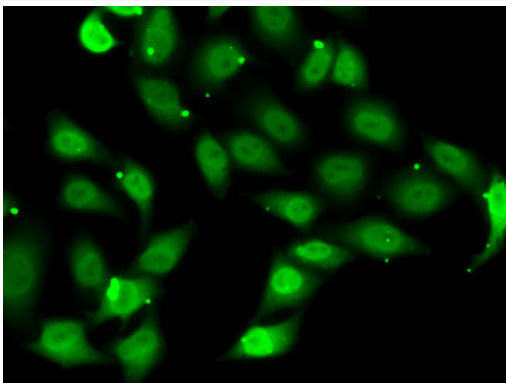
## Description

Product Name	TEAD1 antibody
Host Species	Rabbit
Clonality	Polyclonal
Purification	Antibodies were purified by affinity purification using immunogen.
Applications	WB,IF
Species Reactivity	Human,Mouse,Rat
Specificity	The antibody detects endogenous level of total TEAD1 protein.
Immunogen Type	Recombinant Protein
Immunogen Description	Recombinant protein of human TEAD1.
Target Name	TEAD1
Other Names	AA; REF1; TCF13; TEF-1; NTEF-1; TCF-13; TEAD-1;
Accession No.	Swiss-Prot#: P28347NCBI Gene ID: 7003
Uniprot	P28347
GeneID	7003;
SDS-PAGE MW	47kd
Concentration	1.0mg/ml
Formulation	Supplied at 1.0mg/mL in phosphate buffered saline (without Mg <sup>2+</sup> and Ca <sup>2+</sup> ), pH 7.4, 150mM NaCl, 0.02% sodium azide and 50% glycerol.
Storage	Store at -20°C

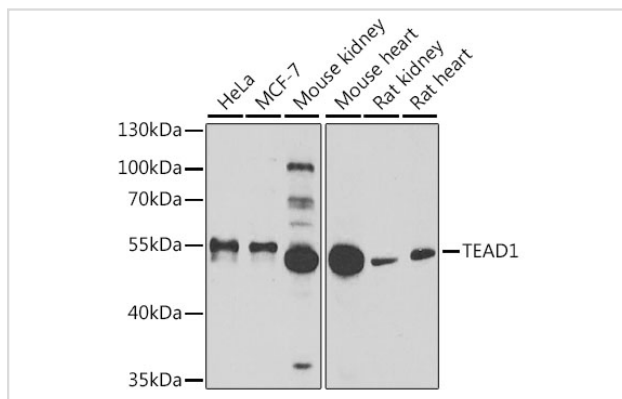
## Application Details

WB 1:500 - 1:2000IF 1:50 - 1:200ChIP 1:50 - 1:200

## Images



Immunofluorescence analysis of MCF7 cells using TEAD1 .



Western blot analysis of extracts of various cell lines, using TEAD1 at 1:1000 dilution.

## Background

This gene encodes a ubiquitous transcriptional enhancer factor that is a member of the TEA/ATTS domain family. This protein directs the transactivation of a wide variety of genes and, in placental cells, also acts as a transcriptional repressor. Mutations in this gene cause Sveinsson's chorioretinal atrophy. Additional transcript variants have been described but their full-length natures have not been experimentally verified.

Note: This product is for in vitro research use only