

## Niban-like protein(Phospho-Ser712) Antibody

Catalog No: #11332



Package Size: #11332-1 50ul #11332-2 100ul

Orders: [order@signalwayantibody.com](mailto:order@signalwayantibody.com)Support: [tech@signalwayantibody.com](mailto:tech@signalwayantibody.com)

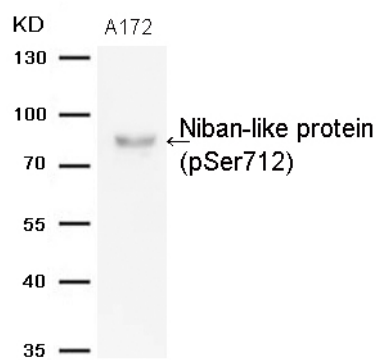
## Description

Product Name	Niban-like protein(Phospho-Ser712) Antibody
Host Species	Rabbit
Clonality	Polyclonal
Purification	Antibodies were produced by immunizing rabbits with synthetic phosphopeptide and KLH conjugates. Antibodies were purified by affinity-chromatography using epitope-specific phosphopeptide. Non-phospho specific antibodies were removed by chromatography using non-phosphopeptide.
Applications	WB
Species Reactivity	Hu Ms
Specificity	The antibody detects endogenous level of Niban-like protein only when phosphorylated at serine 712.
Immunogen Type	Peptide-KLH
Immunogen Description	Peptide sequence around phosphorylation site of serine 712 (Q-V-S-S(p)-P) derived from Human Niban-like protein.
Target Name	Niban-like protein
Modification	Phospho
Other Names	C9orf88
Accession No.	Swiss-Prot#: Q96TA1NCBI Protein#:NP_001030611.1.
Uniprot	Q96TA1
GeneID	64855;
SDS-PAGE MW	80kd
Concentration	1.0mg/ml
Formulation	Supplied at 1.0mg/mL in phosphate buffered saline (without Mg2+ and Ca2+), pH 7.4, 150mM NaCl, 0.02% sodium azide and 50% glycerol.
Storage	Store at -20°C

## Application Details

Western blotting:1:500~1:1000

## Images



Western blot analysis of extracts from A172 cells using Niban-like protein(Phospho-Ser712) AntibodyB #11332.

## Background

May play a role in apoptosis suppression. May promote melanoma cell invasion in vitro.

Note: This product is for in vitro research use only