

DLC1 (Ab-868) Antibody

Catalog No: #21698



Package Size: #21698-1 50ul #21698-2 100ul

Orders: order@signalwayantibody.com
Support: tech@signalwayantibody.com

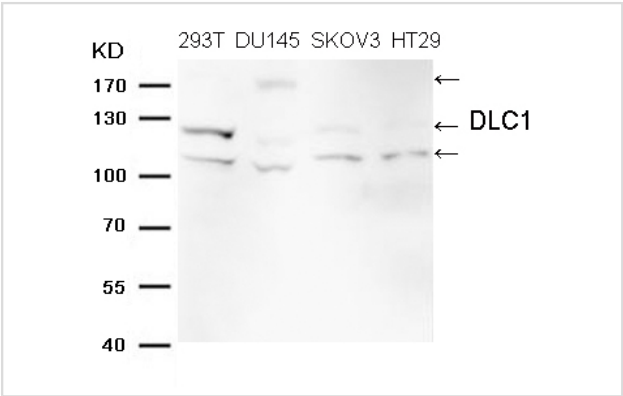
Description

Product Name	DLC1 (Ab-868) Antibody
Purification	Antibodies were produced by immunizing rabbits with synthetic peptide and KLH conjugates. Antibodies were purified by affinity-chromatography using epitope-specific peptide.
Applications	WB
Species Reactivity	Hu
Specificity	The antibody detects endogenous level of total DLC1 protein.
Immunogen Type	Peptide-KLH
Immunogen Description	Peptide sequence around aa.866~870 (R-N-S-S-S) derived from Human DLC1.
Target Name	DLC1
Other Names	ARHGAP7; KIAA1723; STARD12
Accession No.	Swiss-Prot#: Q96QB1NCBI Protein#: NP_872584.2.
Uniprot	Q96QB1
GeneID	10395;
Target Species	Human
SDS-PAGE MW	171, 127, 123, 114kd
Concentration	1.0mg/ml
Formulation	Supplied at 1.0mg/mL in phosphate buffered saline (without Mg2+ and Ca2+), pH 7.4, 150mM NaCl, 0.02% sodium azide and 50% glycerol.
Storage	Store at -20°C

Application Details

Western blotting: 1:500~1:1000

Images



Western blot analysis of extracts from 293T,DU145,SKOV3 and HT29 cells using DLC1 (Ab-868) Antibody #21698.

Background

Functions as a GTPase-activating protein for the small GTPases RHOA, RHOB, RHOC and CDC42, terminating their downstream signaling. This induces morphological changes and detachment through cytoskeletal reorganization, playing a critical role in biological processes such as cell migration and proliferation. Also functions in vivo as an activator of the phospholipase PLCD1. Active DLC1 increases cell migration velocity but reduces directionality.

1)protein DLC-1 on cell morphology and migration."Kim T.Y., Healy K.D., Der C.J., Sciaky N., Bang Y.J., Juliano R.L.J. Biol. Chem. 283:32762-32770(2008)

2)Kawai K., Iwamae Y., Yamaga M., Kiyota M., Ishii H., Hirata H., Homma Y., Yagisawa H. Genes Cells 14:227-241(2009)

3)Erlmann P., Schmid S., Horenkamp F.A., Geyer M., Pomorski T.G., Olayioye M.A. Mol. Biol. Cell 20:4400-4411(2009)

Note: This product is for in vitro research use only