

Deltex1 antibody

Catalog No: #22416



Orders: order@signalwayantibody.com
Support: tech@signalwayantibody.com

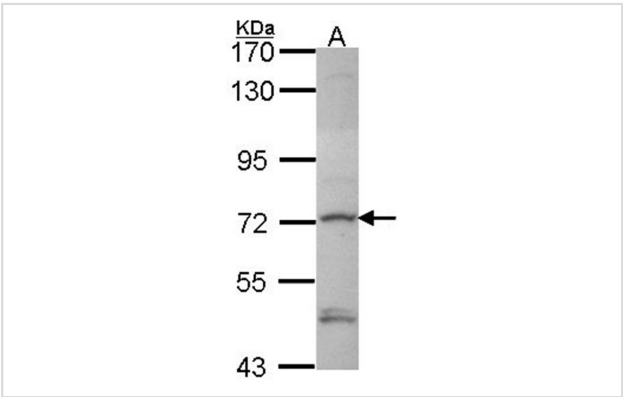
Description

| | |
|-----------------------|---|
| Product Name | Deltex1 antibody |
| Host Species | Rabbit |
| Clonality | Polyclonal |
| Purification | Purified by antigen-affinity chromatography. |
| Applications | WB IHC IF |
| Species Reactivity | Hu |
| Immunogen Type | Recombinant protein |
| Immunogen Description | Recombinant protein fragment contain a sequence corresponding to a region within amino acids 343 and 587 of Deltex1 |
| Target Name | Deltex1 |
| Accession No. | Swiss-Prot:Q86Y01Gene ID:1840 |
| Uniprot | Q86Y01 |
| GeneID | 1840; |
| Concentration | 1mg/ml |
| Formulation | Supplied in 0.1M Tris-buffered saline with 20% Glycerol (pH7.0). 0.01% Thimerosal was added as a preservative. |
| Storage | Store at -20°C for long term preservation (recommended). Store at 4°C for short term use. |

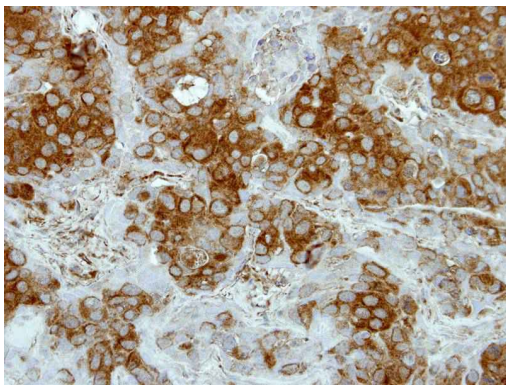
Application Details

| |
|----------------------------------|
| Predicted MW: 67kd |
| Western blotting: 1:500-1:3000 |
| Immunohistochemistry: 1:50-1:500 |
| Immunofluorescence: 1:100-1:200 |

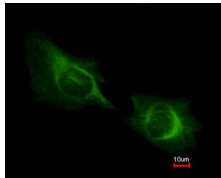
Images



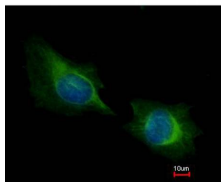
Sample (30 ug of whole cell lysate)
A: Hela
7.5% SDS PAGE
Primary antibody diluted at 1: 1000



Immunohistochemical analysis of paraffin-embedded BT474 xenograft, using Deltex1 antibody at 1: 500 dilution.



Costained with Hoechst 33342



Immunofluorescence analysis of methanol-fixed HeLa, using Deltex1 antibody at 1: 200 dilution.

Background

Studies in *Drosophila* have identified this gene as encoding a positive regulator of the Notch-signaling pathway. The human gene encodes a protein of unknown function; however, it may play a role in basic helix-loop-helix transcription factor activity. [provided by RefSeq]

Note: This product is for in vitro research use only