

M-cadherin Antibody

Catalog No: #39253

Orders: order@signalwayantibody.comSupport: tech@signalwayantibody.com

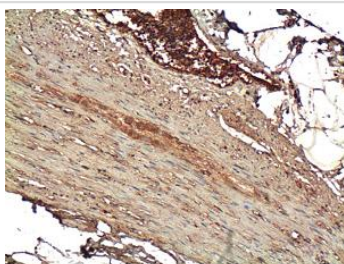
Description

Product Name	M-cadherin Antibody
Host Species	Rabbit
Clonality	Polyclonal
Purification	Peptide affinity purified
Applications	ELISA WB
Species Reactivity	Hu
Specificity	M-cadherin antibody detects endogenous levels of M-cadherin protein. Not tested with other proteins
Immunogen Type	Peptide-KLH
Immunogen Description	peptide from the intermediate residues of human M-cadherin protein.
Target Name	M-cadherin
Concentration	1.0mg/ml
Formulation	PBS, pH 7.4 with 0.02% Sodium Azide
Storage	This product is stable for several weeks at 4°C as an undiluted liquid. Dilute only prior to immediate use. For extended storage, aliquot contents and freeze at -20°C or below. Avoid cycles of freezing and thawing. Expiration date is one (1) year from date of receipt.

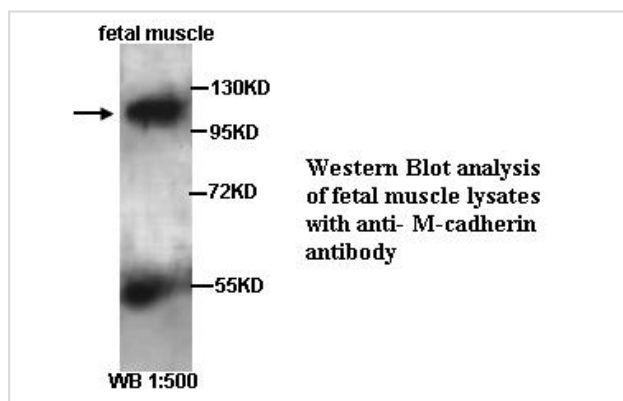
Application Details

ELISA WB: 1:500

Images



Immunohistochemical staining of formalin-fixed paraffin-embedded smooth muscle tissue showing cytoplasmic and nucleus staining with anti-M-cadherin antibody dilution: 1:100



Note: This product is for in vitro research use only