

# DCP2 Antibody

Catalog No: #39263



Orders: [order@signalwayantibody.com](mailto:order@signalwayantibody.com)  
Support: [tech@signalwayantibody.com](mailto:tech@signalwayantibody.com)

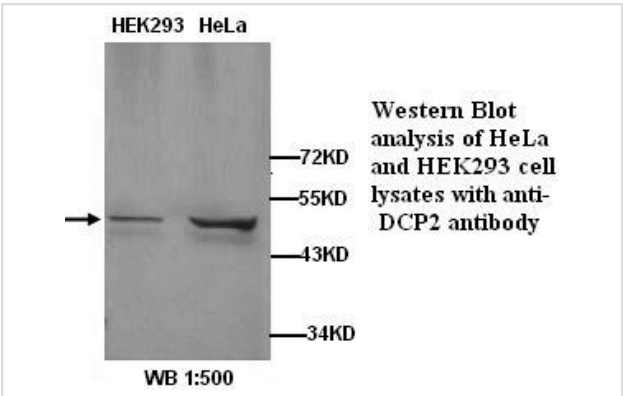
## Description

|                       |   |
|-----------------------|---|
| Product Name          | DCP2 Antibody   |
| Host Species          | Rabbit  |
| Clonality             | Polyclonal  |
| Purification          | Affinity purified   |
| Applications          | ELISA WB  |
| Species Reactivity    | Hu  |
| Specificity           | Not yet tested in other species.  |
| Immunogen Type        | Peptide-KLH   |
| Immunogen Description | Synthetic peptide conjugated to KLH   |
| Target Name           | DCP2  |
| Concentration         | 1.0mg/ml  |
| Formulation           | PBS, pH 7.4 with 0.02% Sodium Azide   |
| Storage               | This product is stable for several weeks at 4°C as an undiluted liquid. Dilute only prior to immediate use. For extended storage, aliquot contents and freeze at -20°C or below. Avoid cycles of freezing and thawing.<br>Expiration date is one (1) year from date of receipt. |

## Application Details

ELISA WB

## Images



Note: This product is for in vitro research use only